

Rexroth IndraControl VPB 40.1

R911312597
Edition 01

Project Planning Manual



Title Rexroth IndraControl VPB 40.1

Type of Documentation Project Planning Manual

Document Typecode DOK-SUPPL*-VPB*40.1***-PR01-EN-P

Internal File Reference
Document Number, 120-2100-B384-01/EN

Purpose of Documentation This documentation describes the industrial PC IndraControl VPB 40.1.

Record of Revisions

Description	Release Date	Notes
120-2100-B384-01/EN	12/05	First Edition

Copyright © 2005, Bosch Rexroth AG
Copying this document, giving it to others and the use or communication of the contents thereof without express authority, are forbidden. Offenders are liable for the payment of damages. All rights are reserved in the event of the grant of a patent or the registration of a utility model or design (DIN 34-1).

Validity The specified data is for product description purposes only and may not be deemed to be guaranteed unless expressly confirmed in the contract. All rights are reserved with respect to the content of this documentation and the availability of the product.

Published by Bosch Rexroth AG
Bgm.-Dr.-Nebel-Str. 2 • D-97816 Lohr a. Main
Telephone +49 (0)93 52/40-0 • Tx 68 94 21 • Fax +49 (0)93 52/40-48 85
<http://www.boschrexroth.com/>
Dept. BRC/EPY (NH)

Note This document has been printed on chlorine-free bleached paper.

Contents

1	System Presentation	1-1
1.1	Brief Description VPB 40.1	1-1
1.2	Variants.....	1-2
	Distinguishing Features	1-2
1.3	Operating System	1-2
1.4	Commissioning	1-2
2	Important Directions for Use	2-1
2.1	Appropriate Use.....	2-1
	Introduction	2-1
	Areas of Use and Application	2-2
2.2	Inappropriate Use	2-2
3	Safety Instructions for Electric Drives and Controls	3-1
3.1	Introduction	3-1
3.2	Explanations	3-1
3.3	Hazards by Improper Use.....	3-2
3.4	General Information	3-3
3.5	Protection Against Contact with Electrical Parts.....	3-4
3.6	Protection Against Electric Shock by Protective Low Voltage (PELV)	3-5
3.7	Protection Against Dangerous Movements	3-6
3.8	Protection Against Magnetic and Electromagnetic Fields During Operation and Mounting	3-8
3.9	Protection Against Contact with Hot Parts.....	3-9
3.10	Protection During Handling and Mounting.....	3-9
3.11	Battery Safety	3-10
3.12	Protection Against Pressurized Systems.....	3-10
4	Technical Data	4-1
4.1	PC Box.....	4-1
4.2	Power Supply Unit 115 V / 230 V	4-2
4.3	Technical Data of the Power Supply Unit 24 V.....	4-2
4.4	Ambient Conditions.....	4-3
4.5	Used Standards	4-3
4.6	Wear Parts	4-4
4.7	Compatibility Test	4-5
5	Housing Dimensions	5-1

6	Display and Operating Components	6-1
6.1	Monitor and Keyboard	6-1
6.2	Operating and Error Indication.....	6-1
7	Connections	7-1
7.1	View on the Connector Panel	7-1
7.2	Interfaces	7-1
	Overview	7-2
	Serial Interfaces XCOM1 to XCOM3	7-3
	Settings of the Serial Interfaces.....	7-3
	Parallel Interface XLPT1	7-4
	USB Interfaces	7-5
	Ethernet Interface XEthernet	7-6
	VGA Interface XVGA	7-6
	Combined Keyboard/Mouse Interface	7-8
	Mouse Interface	7-8
	PC Power Supply.....	7-9
	Battery Connection	7-13
	Optional Interfaces	7-14
8	Maintenance and Installation	8-1
8.1	General Information	8-1
8.2	Hard Disk	8-1
	CMOS Battery	8-3
8.3	Rechargeable Battery Pack	8-3
8.4	Extension Cards	8-5
	Inserting an Extension Card	8-6
	BIOS Settings	8-8
8.5	Replacing Fuses	8-8
9	Software	9-1
9.1	Application Software of the Monitoring Function	9-1
	Temperature Monitoring	9-1
	Uninterruptible Power Supply (UPS)	9-1
9.2	Touch Screen Software	9-11
10	Ordering Information	10-1
10.1	Type Code	10-1
10.2	Accessories	10-2
	Network Connection	10-2
	Battery Pack and Cables	10-2
	Connecting Cables to the VDP 16, VDP 40 and VDP 60 (G4 Display Interface)	10-2
11	List of Figures	11-1
12	Index	12-1

13 Service & Support	13-1
13.1 Helpdesk.....	13-1
13.2 Service-Hotline	13-1
13.3 Internet.....	13-1
13.4 Vor der Kontaktaufnahme... - Before contacting us... ..	13-1
13.5 Kundenbetreuungsstellen - Sales & Service Facilities	13-2

1 System Presentation

1.1 Brief Description VPB 40.1

The VPB 40.1 is an industrial PC, that represents in combination with a display VDP 16, VDP 40 or VDP 60 a PC-based operator terminal, and that can – depending on the application or configuration – also perform control functions.

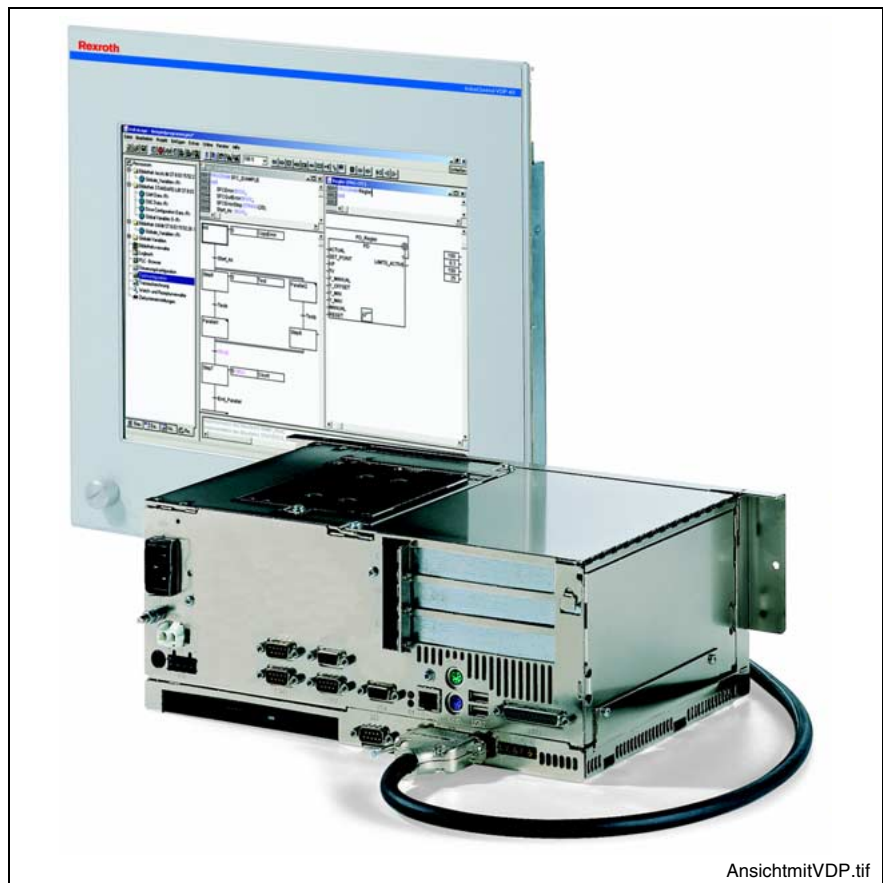


Fig. 1-1: VPB 40.1 with 3 slot box and connected display VDP (not included in the scope of delivery)

The VPB 40.1 is connected with interface G4 of display VDP 16, VDP 40 or VDP 60 via a cable with a length of up to 30 m. Thus, the VPB 40.1 can be installed in the control cabinet and the display in its door or at the machine.

The VPB 40.1 consists of two tightly connected parts:

- The PC box contains the PC including the hard disk and the power supply unit with uninterruptible power supply. Depending on the variant the PC box provides three or four slots. The standard interface and some special interfaces are available on a plugboard.
- The display interface as well as an RS422 interface (X39) to be used as an alternative to the 24 V interface XCOM1 are integrated in the second housing part mounted on this PC box. Furthermore, five light-emitting diodes to display device states and errors are arranged on this housing. Also, the optionally available DVD ROM drive or the CD RW distiller are mounted here.

1.2 Variants

Distinguishing Features

There are different variants of the VPB 40.1. The possible variants are described by the type code (see section 10.1). Principally, they differ in the used PC box equipped with 3 or 4 slots.

PC box	Type A	Type C
Free slots	3	4
Power supply	85 ... 264 VAC or 24 VDC	
Integrated UPS	Integrated UPS_Logic, battery pack to be externally connected	
Optional drives	DVD ROM, DVD ROM / CD RW	

Fig. 1-2: PC box, type A and type C

1.3 Operating System

For license reasons the VPB 40.1 devices are only delivered with already installed operating system.

1.4 Commissioning

Mount the device properly (for this, see chapter 5). Then, connect the device to the power supply and, if required, to the network.

2 Important Directions for Use

2.1 Appropriate Use

Introduction

Rexroth products represent state-of-the-art developments and manufacturing. They are tested prior to delivery to ensure operating safety and reliability.

The products may only be used in the manner that is defined as appropriate. If they are used in an inappropriate manner, then situations can develop that may lead to property damage or injury to personnel.

Note: Bosch Rexroth, as manufacturer, is not liable for any damages resulting from inappropriate use. In such cases, the guarantee and the right to payment of damages resulting from inappropriate use are forfeited. The user alone carries all responsibility of the risks.

Before using Rexroth products, make sure that all the pre-requisites for appropriate use of the products are satisfied:

- Personnel that in any way, shape or form uses our products must first read and understand the relevant safety instructions and be familiar with appropriate use.
- If the product takes the form of hardware, then they must remain in their original state, in other words, no structural changes are permitted. It is not permitted to decompile software products or alter source codes.
- Do not mount damaged or faulty products or use them in operation.
- Make sure that the products have been installed in the manner described in the relevant documentation.

Areas of Use and Application

The VPB 40.1 of Rexroth is an industrial PC, that represents in combination with a display VDP 16, VDP 40 or VDP 60 a PC-based operator terminal, and that can – depending on the application or configuration – also perform control functions..

Note: The VPB 40.1 may only be used with the accessories and parts specified in this document. If a component has not been specifically named, then it may not be either mounted or connected. The same applies to cables and lines.

Operation is only permitted in the specified configurations and combinations of components using the software and firmware as specified in the relevant function descriptions.

In case of non-observance the warranty claim expires automatically.

Typical applications of the VPB 40.1 are:

- Handling and assembly systems
- Packaging and foodstuff machines
- Printing and paper processing machines
- Machine tools
- Wood working machines

The VPB 40.1 may only be operated under the assembly, installation and ambient conditions as described here (temperature, system of protection, humidity, EMC requirements, etc.) and in the position specified.

2.2 Inappropriate Use

Using the VPB 40.1 outside of the above-referenced areas of application or under operating conditions other than described in the document and the technical data specified is defined as “inappropriate use”.

The VPB 40.1 may not be used, if

- it is subject to operating conditions that do not meet the above specified ambient conditions. This includes, for example, operation under water, in the case of extreme temperature fluctuations or extremely high maximum temperatures, or if
- Bosch Rexroth has not specifically released them for that intended purpose. Please note the specifications outlined in the general Safety Guidelines!

3 Safety Instructions for Electric Drives and Controls

3.1 Introduction

Read these instructions before the initial startup of the equipment in order to eliminate the risk of bodily harm or material damage. Follow these safety instructions at all times.

Do not attempt to install or start up this equipment without first reading all documentation provided with the product. Read and understand these safety instructions and all user documentation of the equipment prior to working with the equipment at any time. If you do not have the user documentation for your equipment, contact your local Bosch Rexroth representative to send this documentation immediately to the person or persons responsible for the safe operation of this equipment.

If the equipment is resold, rented or transferred or passed on to others, then these safety instructions must be delivered with the equipment.



WARNING

Improper use of this equipment, failure to follow the safety instructions in this document or tampering with the product, including disabling of safety devices, may result in material damage, bodily harm, electric shock or even death!

3.2 Explanations

The safety instructions describe the following degrees of hazard seriousness in compliance with ANSI Z535. The degree of hazard seriousness informs about the consequences resulting from non-compliance with the safety instructions.

Warning symbol with signal word	Degree of hazard seriousness according to ANSI
 DANGER	Death or severe bodily harm will occur.
 WARNING	Death or severe bodily harm may occur.
 CAUTION	Bodily harm or material damage may occur.

Fig. 3-1: Hazard classification (according to ANSI Z535)

3.3 Hazards by Improper Use



DANGER

**High voltage and high discharge current!
Danger to life or severe bodily harm by electric shock!**



DANGER

Dangerous movements! Danger to life, severe bodily harm or material damage by unintentional motor movements!



WARNING

High electrical voltage due to wrong connections! Danger to life or bodily harm by electric shock!



WARNING

Health hazard for persons with heart pacemakers, metal implants and hearing aids in proximity to electrical equipment!



CAUTION

Surface of machine housing could be extremely hot! Danger of injury! Danger of burns!



CAUTION

Risk of injury due to improper handling! Bodily harm caused by crushing, shearing, cutting and mechanical shock or incorrect handling of pressurized systems!



CAUTION

Risk of injury due to incorrect handling of batteries!

3.4 General Information

- Bosch Rexroth AG is not liable for damages resulting from failure to observe the warnings provided in this documentation.
- Read the operating, maintenance and safety instructions in your language before starting up the machine. If you find that you cannot completely understand the documentation for your product, please ask your supplier to clarify.
- Proper and correct transport, storage, assembly and installation as well as care in operation and maintenance are prerequisites for optimal and safe operation of this equipment.
- Only persons who are trained and qualified for the use and operation of the equipment may work on this equipment or within its proximity.
 - The persons are qualified if they have sufficient knowledge of the assembly, installation and operation of the equipment as well as an understanding of all warnings and precautionary measures noted in these instructions.
 - Furthermore, they must be trained, instructed and qualified to switch electrical circuits and equipment on and off in accordance with technical safety regulations, to ground them and to mark them according to the requirements of safe work practices. They must have adequate safety equipment and be trained in first aid.
- Only use spare parts and accessories approved by the manufacturer.
- Follow all safety regulations and requirements for the specific application as practiced in the country of use.
- The equipment is designed for installation in industrial machinery.
- The ambient conditions given in the product documentation must be observed.
- Use only safety features and applications that are clearly and explicitly approved in the Project Planning Manual. If this is not the case, they are excluded.

The following areas of use and application, for example, include safety features and applications: construction cranes, elevators used for people or freight, devices and vehicles to transport people, medical applications, refinery plants, transport of hazardous goods, nuclear applications, applications in which electrical devices with vital functions can be electromagnetically disturbed, mining, food processing, control of protection equipment (also in a machine).
- The information given in the documentation of the product with regard to the use of the delivered components contains only examples of applications and suggestions.

The machine and installation manufacturer must

 - make sure that the delivered components are suited for his individual application and check the information given in this documentation with regard to the use of the components,
 - make sure that his application complies with the applicable safety regulations and standards and carry out the required measures, modifications and complements.
- Startup of the delivered components is only permitted once it is sure that the machine or installation in which they are installed complies with the national regulations, safety specifications and standards of the application.
- Technical data, connections and operational conditions are specified in the product documentation and must be followed at all times.

- Operation is only permitted if the national EMC regulations for the application are met.
The instructions for installation in accordance with EMC requirements can be found in the documentation "EMC in Drive and Control Systems".
The machine or installation manufacturer is responsible for compliance with the limiting values as prescribed in the national regulations.

3.5 Protection Against Contact with Electrical Parts

Note: This section refers to equipment and drive components with voltages above 50 Volts.

Touching live parts with voltages of 50 Volts and more with bare hands or conductive tools or touching ungrounded housings can be dangerous and cause electric shock. In order to operate electrical equipment, certain parts must unavoidably have dangerous voltages applied to them.



DANGER

High electrical voltage! Danger to life, severe bodily harm by electric shock!

- ⇒ Only those trained and qualified to work with or on electrical equipment are permitted to operate, maintain or repair this equipment.
 - ⇒ Follow general construction and safety regulations when working on high voltage installations.
 - ⇒ Before switching on power the ground wire must be permanently connected to all electrical units according to the connection diagram.
 - ⇒ Do not operate electrical equipment at any time, even for brief measurements or tests, if the ground wire is not permanently connected to the points of the components provided for this purpose.
 - ⇒ Before working with electrical parts with voltage higher than 50 V, the equipment must be disconnected from the mains voltage or power supply. Make sure the equipment cannot be switched on again unintended.
 - ⇒ The following should be observed with electrical drive and filter components:
 - ⇒ Wait thirty (30) minutes after switching off power to allow capacitors to discharge before beginning to work. Measure the voltage on the capacitors before beginning to work to make sure that the equipment is safe to touch.
 - ⇒ Never touch the electrical connection points of a component while power is turned on.
 - ⇒ Install the covers and guards provided with the equipment properly before switching the equipment on. Prevent contact with live parts at any time.
 - ⇒ A residual-current-operated protective device (RCD) must not be used on electric drives! Indirect contact must be prevented by other means, for example, by an overcurrent protective device.
 - ⇒ Electrical components with exposed live parts and uncovered high voltage terminals must be installed in a protective housing, for example, in a control cabinet.
-

To be observed with electrical drive and filter components:



DANGER

**High electrical voltage on the housing!
High leakage current! Danger to life, danger of
injury by electric shock!**

- ⇒ Connect the electrical equipment, the housings of all electrical units and motors permanently with the safety conductor at the ground points before power is switched on. Look at the connection diagram. This is even necessary for brief tests.
 - ⇒ Connect the safety conductor of the electrical equipment always permanently and firmly to the supply mains. Leakage current exceeds 3.5 mA in normal operation.
 - ⇒ Use a copper conductor with at least 10 mm² cross section over its entire course for this safety conductor connection!
 - ⇒ Prior to startups, even for brief tests, always connect the protective conductor or connect with ground wire. Otherwise, high voltages can occur on the housing that lead to electric shock.
-

3.6 Protection Against Electric Shock by Protective Low Voltage (PELV)

All connections and terminals with voltages between 0 and 50 Volts on Rexroth products are protective low voltages designed in accordance with international standards on electrical safety.



WARNING

**High electrical voltage due to wrong
connections! Danger to life, bodily harm by
electric shock!**

- ⇒ Only connect equipment, electrical components and cables of the protective low voltage type (PELV = Protective Extra Low Voltage) to all terminals and clamps with voltages of 0 to 50 Volts.
 - ⇒ Only electrical circuits may be connected which are safely isolated against high voltage circuits. Safe isolation is achieved, for example, with an isolating transformer, an opto-electronic coupler or when battery-operated.
-

3.7 Protection Against Dangerous Movements

Dangerous movements can be caused by faulty control of the connected motors. Some common examples are:

- improper or wrong wiring of cable connections
- incorrect operation of the equipment components
- wrong input of parameters before operation
- malfunction of sensors, encoders and monitoring devices
- defective components
- software or firmware errors

Dangerous movements can occur immediately after equipment is switched on or even after an unspecified time of trouble-free operation.

The monitoring in the drive components will normally be sufficient to avoid faulty operation in the connected drives. Regarding personal safety, especially the danger of bodily injury and material damage, this alone cannot be relied upon to ensure complete safety. Until the integrated monitoring functions become effective, it must be assumed in any case that faulty drive movements will occur. The extent of faulty drive movements depends upon the type of control and the state of operation.

**DANGER****Dangerous movements! Danger to life, risk of injury, severe bodily harm or material damage!**

- ⇒ Ensure personal safety by means of qualified and tested higher-level monitoring devices or measures integrated in the installation. Unintended machine motion is possible if monitoring devices are disabled, bypassed or not activated.
- ⇒ Pay attention to unintended machine motion or other malfunction in any mode of operation.
- ⇒ Keep free and clear of the machine's range of motion and moving parts. Possible measures to prevent people from accidentally entering the machine's range of motion:
 - use safety fences
 - use safety guards
 - use protective coverings
 - install light curtains or light barriers
- ⇒ Fences and coverings must be strong enough to resist maximum possible momentum, especially if there is a possibility of loose parts flying off.
- ⇒ Mount the emergency stop switch in the immediate reach of the operator. Verify that the emergency stop works before startup. Don't operate the machine if the emergency stop is not working.
- ⇒ Isolate the drive power connection by means of an emergency stop circuit or use a starting lockout to prevent unintentional start.
- ⇒ Make sure that the drives are brought to a safe standstill before accessing or entering the danger zone. Safe standstill can be achieved by switching off the power supply contactor or by safe mechanical locking of moving parts.
- ⇒ Secure vertical axes against falling or dropping after switching off the motor power by, for example:
 - mechanically securing the vertical axes
 - adding an external braking/ arrester/ clamping mechanism
 - ensuring sufficient equilibration of the vertical axesThe standard equipment motor brake or an external brake controlled directly by the drive controller are not sufficient to guarantee personal safety!
- ⇒ Disconnect electrical power to the equipment using a master switch and secure the switch against reconnection for:
 - maintenance and repair work
 - cleaning of equipment
 - long periods of discontinued equipment use
- ⇒ Prevent the operation of high-frequency, remote control and radio equipment near electronics circuits and supply leads. If the use of such equipment cannot be avoided, verify the system and the installation for possible malfunctions in all possible positions of normal use before initial startup. If necessary, perform a special electromagnetic compatibility (EMC) test on the installation.

3.8 Protection Against Magnetic and Electromagnetic Fields During Operation and Mounting

Magnetic and electromagnetic fields generated near current-carrying conductors and permanent magnets in motors represent a serious health hazard to persons with heart pacemakers, metal implants and hearing aids.



WARNING

Health hazard for persons with heart pacemakers, metal implants and hearing aids in proximity to electrical equipment!

- ⇒ Persons with heart pacemakers, hearing aids and metal implants are not permitted to enter the following areas:
- Areas in which electrical equipment and parts are mounted, being operated or started up.
 - Areas in which parts of motors with permanent magnets are being stored, operated, repaired or mounted.
- ⇒ If it is necessary for a person with a heart pacemaker to enter such an area, then a doctor must be consulted prior to doing so. Heart pacemakers that are already implanted or will be implanted in the future, have a considerable variation in their electrical noise immunity. Therefore there are no rules with general validity.
- ⇒ Persons with hearing aids, metal implants or metal pieces must consult a doctor before they enter the areas described above. Otherwise, health hazards will occur.

3.9 Protection Against Contact with Hot Parts



CAUTION

**Housing surfaces could be extremely hot!
Danger of injury! Danger of burns!**

- ⇒ Do not touch housing surfaces near sources of heat!
Danger of burns!
 - ⇒ After switching the equipment off, wait at least ten (10) minutes to allow it to cool down before touching it.
 - ⇒ Do not touch hot parts of the equipment, such as housings with integrated heat sinks and resistors.
Danger of burns!
-

3.10 Protection During Handling and Mounting

Under certain conditions, incorrect handling and mounting of parts and components may cause injuries.



CAUTION

Risk of injury by incorrect handling! Bodily harm caused by crushing, shearing, cutting and mechanical shock!

- ⇒ Observe general installation and safety instructions with regard to handling and mounting.
 - ⇒ Use appropriate mounting and transport equipment.
 - ⇒ Take precautions to avoid pinching and crushing.
 - ⇒ Use only appropriate tools. If specified by the product documentation, special tools must be used.
 - ⇒ Use lifting devices and tools correctly and safely.
 - ⇒ For safe protection wear appropriate protective clothing, e.g. safety glasses, safety shoes and safety gloves.
 - ⇒ Never stand under suspended loads.
 - ⇒ Clean up liquids from the floor immediately to prevent slipping.
-

3.11 Battery Safety

Batteries contain reactive chemicals in a solid housing. Inappropriate handling may result in injuries or material damage.



CAUTION

Risk of injury by incorrect handling!

- ⇒ Do not attempt to reactivate discharged batteries by heating or other methods (danger of explosion and cauterization).
- ⇒ Never charge non-chargeable batteries (danger of leakage and explosion).
- ⇒ Never throw batteries into a fire.
- ⇒ Do not dismantle batteries.
- ⇒ Do not damage electrical components installed in the equipment.

Note: Be aware of environmental protection and disposal! The batteries contained in the product should be considered as hazardous material for land, air and sea transport in the sense of the legal requirements (danger of explosion). Dispose batteries separately from other waste. Observe the legal requirements in the country of installation.

3.12 Protection Against Pressurized Systems

Certain motors and drive controllers, corresponding to the information in the respective Project Planning Manual, must be provided with pressurized media, such as compressed air, hydraulic oil, cooling fluid and cooling lubricant supplied by external systems. Incorrect handling of the supply and connections of pressurized systems can lead to injuries or accidents. In these cases, improper handling of external supply systems, supply lines or connections can cause injuries or material damage.



CAUTION

Danger of injury by incorrect handling of pressurized systems !

- ⇒ Do not attempt to disassemble, to open or to cut a pressurized system (danger of explosion).
- ⇒ Observe the operation instructions of the respective manufacturer.
- ⇒ Before disassembling pressurized systems, release pressure and drain off the fluid or gas.
- ⇒ Use suitable protective clothing (for example safety glasses, safety shoes and safety gloves)
- ⇒ Remove any fluid that has leaked out onto the floor immediately.

Note: Environmental protection and disposal! The media used in the operation of the pressurized system equipment may not be environmentally compatible. Media that are damaging the environment must be disposed separately from normal waste. Observe the legal requirements in the country of installation.

4 Technical Data

4.1 PC Box

PC box	Type A	Type C
Processor	Celeron M with minimum 1.3 GHz and integrated graphic controller with maximum 8 MB video memory	
Working memory	512 MB	
Hard disk	Min. 20 GB, mounted within a vibration-resistant suspension	
Optional drives	DVD ROM or DVD ROM / CD RW	
Interfaces	<ul style="list-style-type: none"> • 1 x G4 display interface (25-pin, D-Sub) • 1 x parallel interface (25-pin, D-Sub) • 1 x external VGA connection (15-pin, HD-Sub) • 2 x USB connection (type A) • 1 x Ethernet connection (RJ 45, 10/100 Base-T) • 1 x keyboard connection (PS/2) • 1 x mouse connection (PS/2) • 1 x external battery connection • 3 x serial standard interface RS232 (9-pin, D-Sub) ¹ • 1 x RS422 interface (9-pin, D-Sub) 	
Slots	2 x PCI, 1 x PCI / ISA	3 x PCI, 1 x PCI / ISA
Degree of protection	PC box: IP 00	
Power supply	85/264 VAC or 24 VDC	
Max. power consumption	200 W	

Fig. 4-1: Technical data: PC box

¹ For devices with touch screen 2 serial interfaces

4.2 Power Supply Unit 115 V / 230 V

Nominal input voltage:	115 VAC / 230 VAC	
Input voltage range:	85 ... 264 VAC	
Input current:	1.0 A for nominal voltage 230 VAC 2.0 A for nominal voltage 115 VAC	
Max. inrush current (cold start 25 °C)	40 A for nominal voltage 230 VAC 20 A for nominal voltage 115 VAC	
Output voltages:	Current (max.)*	Tolerance (incl. residual ripple)
+5 V	20 A	+/-5 %
+12 V	3 A	+/-5 %
-12 V	500 mA	+/-5 %
+20 V	2 A	+/-5 %
ISO 6V	200 mA	+/-5 %
Max. output power:	160 W*	
Efficiency:	0,8	

*) Note: During specifying the maximum output currents please observe that the currents separately considered are the maximum possible currents of the respective output voltage. However, it is not possible to create the maximum current from all output voltages, as the maximum total output power (= 160 W) must not be exceeded.

Fig. 4-2: Technical data of the power supply unit 115 V / 230 V

4.3 Technical Data of the Power Supply Unit 24 V

Nominal input voltage:	24 VDC	
Input voltage range:	24 VDC +20%, -15%	
Noise and surge immunity	U _{max} = 35 V (for t < 100 ms)	
Max. input current:	6 A for nominal voltage 24 V	
Max. inrush current:	25 A for nominal voltage 24 V	
Output voltages:	Current (max.)*	Tolerance (incl. residual ripple)
+5 V	13 A	+/-5 %
+12 V	3 A	+/-5 %
+24 V	2 A	+/-5 %
-12 V	500 mA	+/-5 %
ISO 6V	200 mA	+/-5 %
Max. output power:	110 W*	
Efficiency:	0,8	

*) Note: During specifying the maximum output currents please observe that the currents separately considered are the maximum possible currents of the respective output voltage. However, it is not possible to create the maximum current from all output voltages, as the maximum total output power (= 110 W) must not be exceeded.

Fig. 4-3: Technical data of the power supply unit 24 V

4.4 Ambient Conditions

	In operation	Storage/Transport
Max. surrounding air temperature	+5 °C... +45 °C	-20 °C to +60 °C
Max. temperature gradient	Temporal temperature changes up to 3 °C per minute	Not defined
Relative humidity	Climatic class 3K3 according to EN 60721, condensation not permissible.	Climatic class 3K3 according to EN 60721, condensation not permissible.
Air pressure	Up to 2,000 m above MSL according to DIN 60204	
Mechanical strength	Max. vibration: Frequency range: 10...150 Hz Excursion: 0.075 mm for 10 ... 57 Hz Acceleration: 1 g for 57 ... 150 Hz According to EN 60068-2-6	Max. shock: 15 g according to DIN IEC 68-2-27, no disturbance of the function
Degree of pollution	2	2

Fig. 4-4: Ambient conditions

4.5 Used Standards

The system components of the VPB 40.1 correspond to the following standards:

Standard	Meaning
EN 60 204-1	Electrical equipment of machines
EN 50 081-2	Basic technical standard, emitted interference (industrial environment)
EN 50 082-2	Basic technical standard, noise immunity (industrial environment)
EN 60 742	Transformer for 24 V power supply unit, protective separation
EN 60 950	Overvoltage category II
EN 61 131	Requirements concerning the 24 V outputs
EN 61 131-2	Requirements concerning the 24 power supply
EN 418	Machine safety, EMERGENCY STOP devices
EN 60 529	Degrees of protection (incl. housings and installation compartments)
EN 60 068-2-6	Vibration test
EN 60 068-2-27	Shock test

Fig. 4-5: Used standards

Note: Concerning delivered VPB 40.1 devices all CE requirements are fulfilled. After plugging-in extension cards, however, a new CE test has to be executed.

UL/CSA Certification

The VPB 40.1 devices are basically certificated according to

- **UL508** (Industrial Control Equipment) and
- **C22.2 No. 14-M95** (CSA)

However, it is possible that there are combinations or extension stages with restricted or missing certification. Thus, verify the registration according to the UL marking on the device.

Note: To guarantee an UL/CSA-compliant operation, you have to fulfill the following conditions:

- Use 60/75 °C copper wire only.
 - Use Class 1 wire only or equivalent.
-

Note: The UL/CSA marking is only valid for the device in its delivery status. After having modified the device, e. g. after plugging-in additional extension cards, the UL compliancy has to be verified.

4.6 Wear Parts

Wear Parts without Warranty

- CMOS battery: 5 to 7 years
- Battery pack: The number of charging cycles of the battery pack and thus, its service life is dependent on the surrounding air temperature, in which the battery pack is used. Surrounding air temperature is defined as the temperature, in which the industrial PC or the battery pack is situated, e.g. the internal temperature of the control cabinet or in a operator panel housing.

Surrounding air temperature	Charging cycles	Maintenance interval
25°C	4000 cycles	6 years
35°C	2000 cycles	3 years
45°C	1000 cycles	1.5 years

Fig. 4-6: Battery pack

If you don't exactly know the conditions, Bosch Rexroth recommends to exchange the battery pack every 1.5 years.

- Hard disk: The hard disk is an electromechanic wear part, that has to be changed during the operating time. According to the manufacturer's specifications the hard disk has been developed for a service life of 60 months in consideration of the following conditions:

Operating hours / month		Max. 333
Input/output cycles / month		Min. 10 and max. 150
Operating conditions	Temperature	40 °C
	Rel. humidity	30 %
	Height	< 500 m
	Accesses	30 % of the operating hours
Storage conditions	Temperature	< 30 °C
	Rel. humidity	< 70 %
	Duration	< 3 months

Fig. 4-7: Typical operating and storage conditions of the hard disk

The operation out of this typical conditions is permissible, whereby, however, the service life of the hard disk may reduce. However, the ambient conditions specified for the overall device in chapter 4.4 have to be absolutely kept.

- Also fans are mechanic wear components, whose service life is extremely temperature-dependent. For the fan integrated in the housing the manufacturer specifies the following service life:

Surrounding air temperature	Service life
40 °C	70,000 hours
70 °C	35,000 hours

Fig. 4-8: Service life of the fan

4.7 Compatibility Test

All Rexroth controls and drives are developed and tested according to the latest state-of-the-art.

As it is impossible to follow the continuing development of all materials (e.g. lubricants in machine tools) which may interact with our controls and drives, it cannot be completely ruled out that any reactions with the materials used by Bosch Rexroth might occur.

For this reason, before using the respective material a compatibility test has to be carried out for new lubricants, cleaning agents etc. and our housings/our housing materials.

5 Housing Dimensions

The VPB 40.1 can be mounted, e. g. in the control cabinet with the help of four fastening holes. Please refer to figure Fig. 5-1 and Fig. 5-3 for the corresponding dimensions.

The VPB 40.1 may be mounted horizontally (net connection on the left side) as well as vertically (net connection on the top).

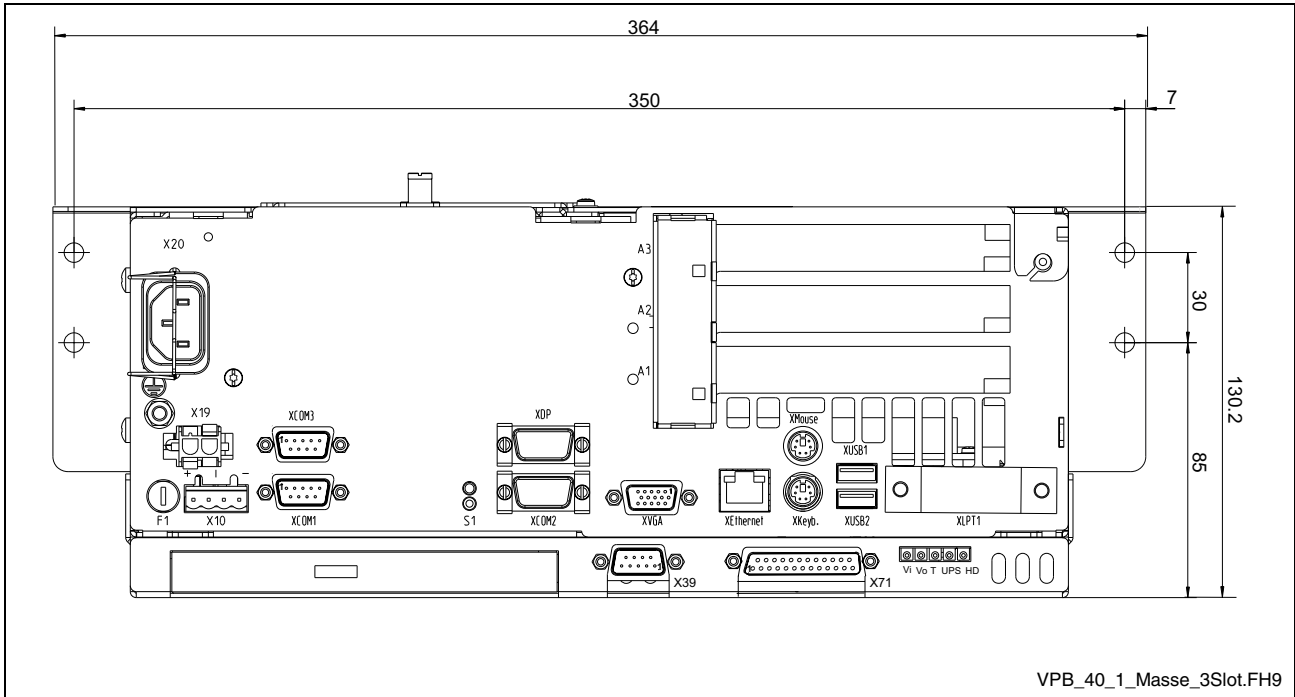


Fig. 5-1: Horizontal mounting of the VPB 40.1 (device with 3 slot box)

The height of the VPB 40.1 depends on the slot number of the used PC box:

PC box	Number of slots	Height of the VPB 40.1
Type A	3	130.2 mm (plus 10 mm for the screw of the hard disk cover)
Type C	4	150.5 mm (plus 10 mm for the screw of the hard disk cover)

Fig. 5-2: Height of the VPB 40.1

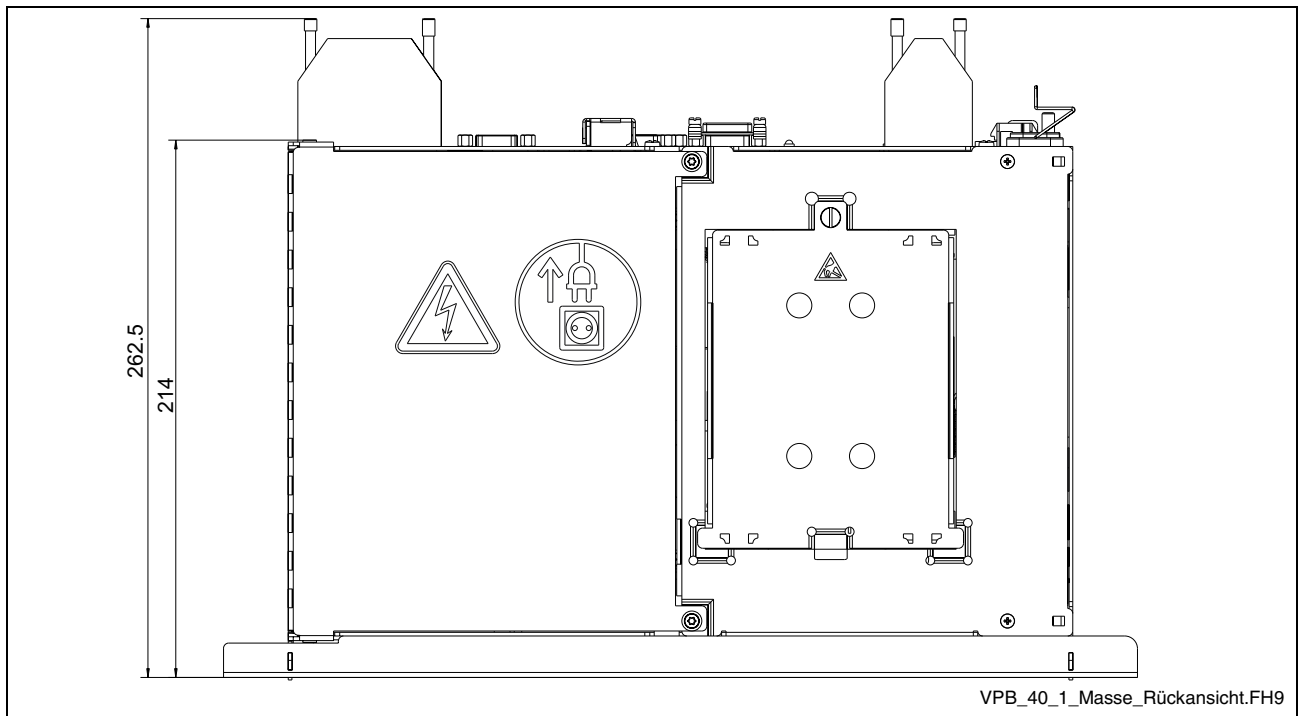


Fig. 5-3: Dimensions of the VPB 40.1 (top view)

6 Display and Operating Components

6.1 Monitor and Keyboard

To display and operate the VPB 40.1 we recommend the displays VDP 16, VDP 40 and VDP 60 especially designed by Bosch Rexroth for industrial applications. The displays are connected with the VPB 40.1 via the G4 display interface. These displays are equipped either with a keypad or with a touch screen with varying display seize.

Note: Detailed information you will find in the corresponding documentation.

You can also connect a standard monitor (female connector XVGA), a PS2 keyboard (female connector XKeyb.) and a PS2 mouse (female connector XMouse) with the VBP 40.1. Please observe that most of the standard mice and keyboards are not suitable for the industrial environment and are very susceptible to electromagnetic disturbances.

Note: If a VDP is used, keyboard and mouse may only be connected to this display. Don't use the keyboard and mouse interfaces at the VPB 40.1.

6.2 Operating and Error Indication

In the upper right part of the connector panel there are five LEDs to indicate the device states and errors. Start the measure specified in the following table, if one of the succeeding LEDs indicates an error or a note.

LED	Display	Meaning	Measure
Vi	LED green	Normal mode	-
	LED OFF	No supply voltage 230/115 VAC or 24 VDC	Check supply voltage at the power supply unit!
Vo	LED green	Normal mode	-
	LED OFF	Internal 5 V supply faulty!	-
T	LED OFF	Normal mode	
	LED yellow flashing	Over-temperature	Reduce surrounding air temperature! Check fan at the PC!
UPS	LED OFF	Normal mode	-
	LED red	VPB 40.1 is currently operating in battery mode, i. e. no power supply available!	Restore power supply and initiate controlled VPB restart!
	LED red flashing	Battery pack discharged, defective or not connected	Check battery pack! Maintain the charging time of 5 hours!
HDD	LED yellow	Hard disk access	-

Fig. 6-1: LEDs to indicate operations and errors on the connector panel

7 Connections

7.1 View on the Connector Panel

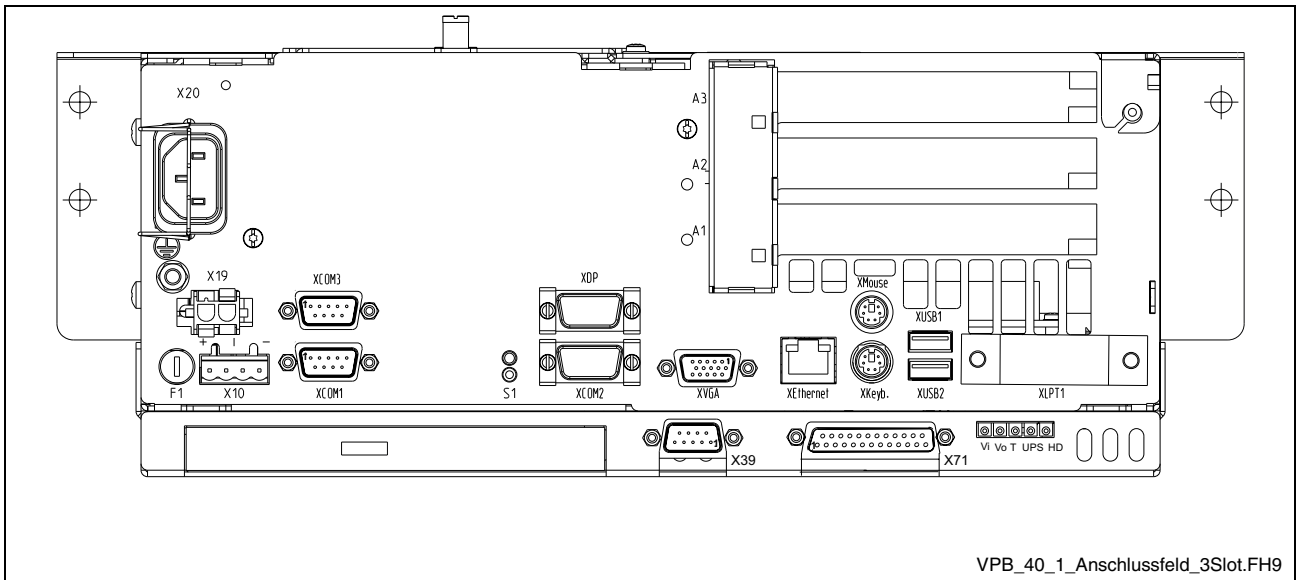


Fig. 7-1: Position of the interfaces

7.2 Interfaces

Note: Not each variant provides all the described interfaces. Which interfaces are integrated in the respective device depends on the device configuration.

Note: Malfunctions caused by insufficient shielding! Use only shielded cables and metallic/conductive connector or coupling covers with large-area screen contact.

Overview

	Des. on the housing	Type of connection	Type of connector (integrated)	Mating connector or cable (from outside)
o	XCOM1, XCOM2, XCOM3	Serial interfaces: RS232 (UART 16550), not assigned	D-Sub male connector, 9-pin	D-Sub female connector, 9-pin
o	XLPT1	Parallel interface: supports standard SPP-, EPP-, ECP-mode	D-Sub female connector, 25-pin	D-Sub male connector, 25-pin (e. g. printer cable)
o	XUSB1, XUSB2	USB interfaces	USB female connector, 4-pin, type A	USB male connector, 4-pin
o	XEthernet	Network connection: Ethernet 10Base T / 100Base X	RJ45 female connector, 8-pin	RJ45 connector (twisted pair, 8-core)
o	XVGA	VGA connection of an external CRT monitor	VGA HD female connector, 15-pin	VGA HD male connector, 15-pin
o	XKeyb.	PS/2 Keyboard/Mouse	Mini-DIN PS/2 female connector, 6-pin	Mini-DIN PS/2 male connector, 6-pin
o	XMouse	PS/2 mouse	Mini-DIN PS/2 female connector, 6-pin	Mini-DIN PS/2 male connector, 6-pin
o	X10	PC power supply: 24 VDC (as an alternative to X20)	Male connector terminal, MSTB 1.5, 4-pin	Female connector terminal, MSTB 1.5, 4-pin
o	X19	Battery for uninterruptible power supply	Tyco/AMP MATE-N-LOK, 2-pin	Cable to the battery of the UPS
o	X20	PC power supply: 230/115 VAC	Inlet male connector for non-heating apparatus	Inlet female connector for non-heating apparatus
o	X39 or X43	Serial RS422 interface	D-Sub male connector, 9-pin	D-Sub female connector, 9-pin
	Optionally either			
o	X71	GIGABIT3 interface (for BTT 16.1 or BTT 40.1)	D-Sub female connector, 25-pin	D-Sub male connector, 25-pin
	or			
	X71	G4 display interface (for VDP 16, VDP 40 or VDP 60)	D-Sub female connector, 25-pin	D-Sub male connector, 25-pin

Connection point: o= Top side of the housing

Fig. 7-2: Interfaces of the VPB 40.1

Serial Interfaces XCOM1 to XCOM3

XCOM1 to XCOM3 – Serial Interfaces Depending on the device variant up to three serial standard interfaces are available at the connections XCOM1 to XCOM3.

D-Sub male connector, 9-pin			
Type:	RS232		
Cable length:	Max. 15 m		
Cable type:	Shielded, cross section min. 0.14 mm ²		
Transmission rate:	Max. 115200 bits/s		
Handshake:	Hardware and software handshake (XON, XOFF)		
	XCOM1	XCOM2	XCOM3
Interrupt (IRQ):	4	3	11
I/O address:	3F8H	2F8H	3E8H
BIOS presettings:	Enabled	Enabled	Enabled

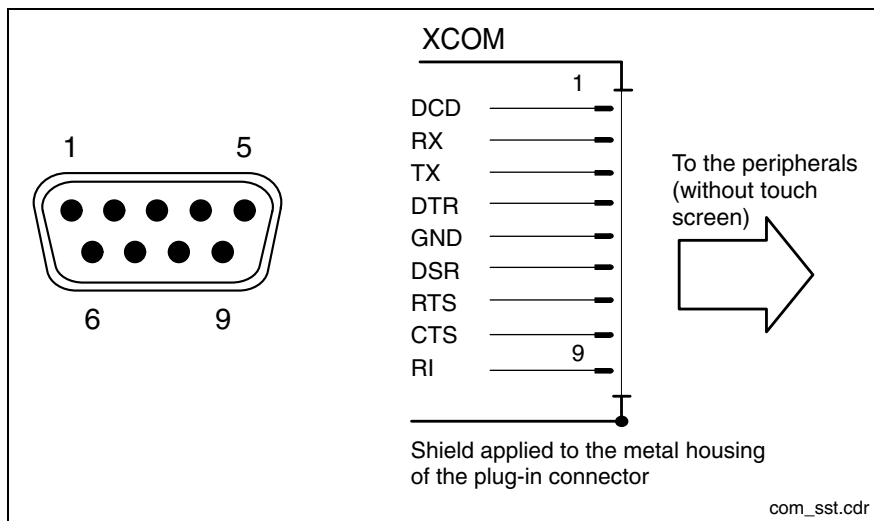


Fig. 7-3: Pin assignment XCOM1 to XCOM3

Note: Depending on the variant and the used software packages the interfaces can be already taken.

Settings of the Serial Interfaces

Control Panel To find out settings of the transfer parameters for the serial interfaces, please refer to the description of the installed operating system (for Windows XP under Settings, Control Panel, Device Manager").

BIOS The BIOS settings of the serial interface are set as follows:

COM1 = 3F8H COM2 = 2F8H
COM3 = 3E8H COM4 = 2E8H

Note: Interrupt (IRQ) and I/O address must coincide with the settings made in BIOS.

If an address conflict regarding COM3 occurs, e. g., IRQ 11 is already occupied by other extension cards of the PC, free IRQs have to be used.

Parallel Interface XLPT1

XLPT1 – Parallel Interface for Printer, Scanner, etc.

D-Sub female connector, 25-pin	
Type:	SPP (ex works), EPP, ECP
Cable length:	Max. 3 m
Cable type:	Shielded, cross section min. 0.14 mm ²
Interrupt (IRQ):	7
I/O address:	378H

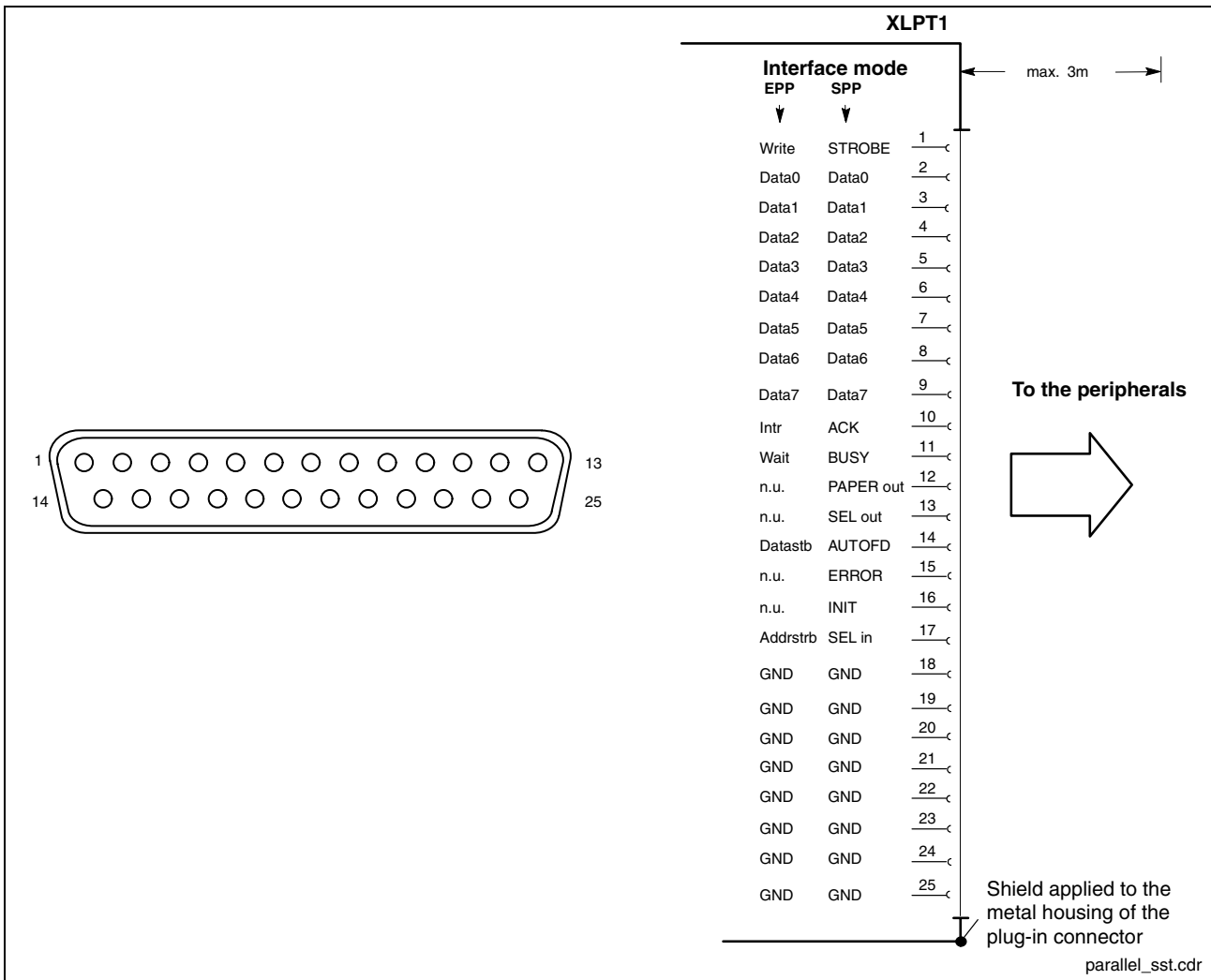


Fig. 7-4: XLPT1 interface

The parallel interface normally runs in the standard mode SPP. Furthermore, it can be operated in the EPP mode (Enhanced Parallel Port) or in the ECP mode (Extended Capabilities Port), if the suitable peripheral equipment is available. The mode can be changed in the BIOS settings.

USB Interfaces

XUSB – Serial Interfaces for Printer, Scanner, CD-ROM Drive

The devices feature two USB interfaces on the connector panel (XUSB1 and XUSB2) and one in the device (on the carrier board).

Note: The maximum power consumption of the connected device must not exceed 500 mA. If the load exceeds 500 mA, the internal current monitoring is activated.

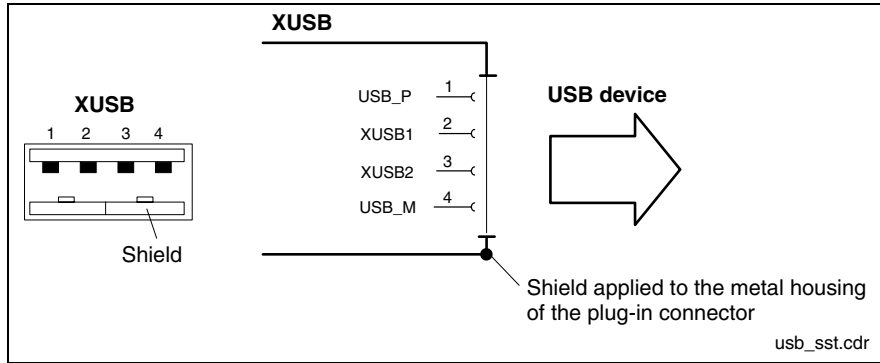


Fig. 7-5: USB interfaces XUSB1 and XUSB2

Pin	Function
1	USB power supply (max. 500 mA)
2	Data -
3	Data +
4	USB ground

Ethernet Interface XEthernet

XEthernet – Network Connection The VPB 40.1 can be connected with an Ethernet network via the XEthernet interface.

RJ45 female connector, 8-pin	
Type:	Ethernet 10Base T / 100Base X
Cable length:	Max. 100 m
Cable type:	Shielded, twisted pair
Transmission rate:	10 or 100 Mbits/s

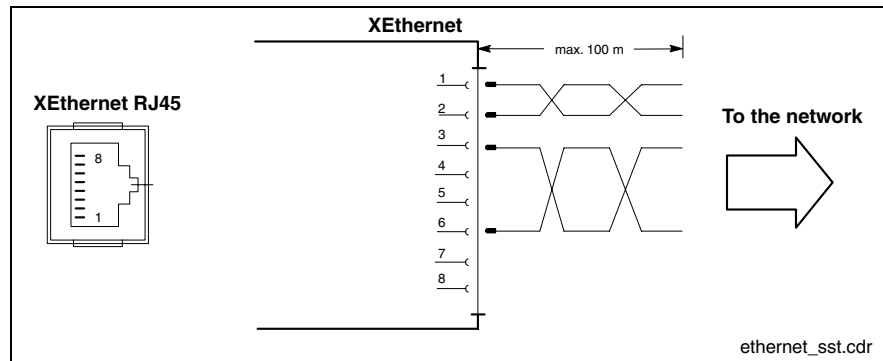


Fig. 7-6: Ethernet interface XEthernet

The driver configuration of the network connection can be called up in the task bar or in the "Control Panel" with icon "Network Board". Here you can set among other values, if the data transmission shall occur with 10 Mbits/s and/or with 100 Mbits/s.

Note: Please observe that the network board of the outstation has to be able to process the same data transmission rate.

VGA Interface XVGA

XVGA – Connection for an External Monitor

An external monitor (CRT) can be connected to the VGA connection (XVGA) and can be operated parallel to the integrated flat screen via the integrated video adapter.

- Video RAM: Max. 8 MB

Note: Please observe that the external monitor has to be already connected during the booting process of the VPB 40.1, as otherwise the VGA interface is not initialized by the BIOS.

Note: Before plugging-in a graphics card the video adapter integrated in BIOS has to be switched off.

HD female connector, 15-pin	
Cable length:	Max. 1.5 m
Cable type:	Shielded, cross section min. 0.14 mm ²
Max. resolution:	1600 x 1200 pixels, max. 4294 mill. colors

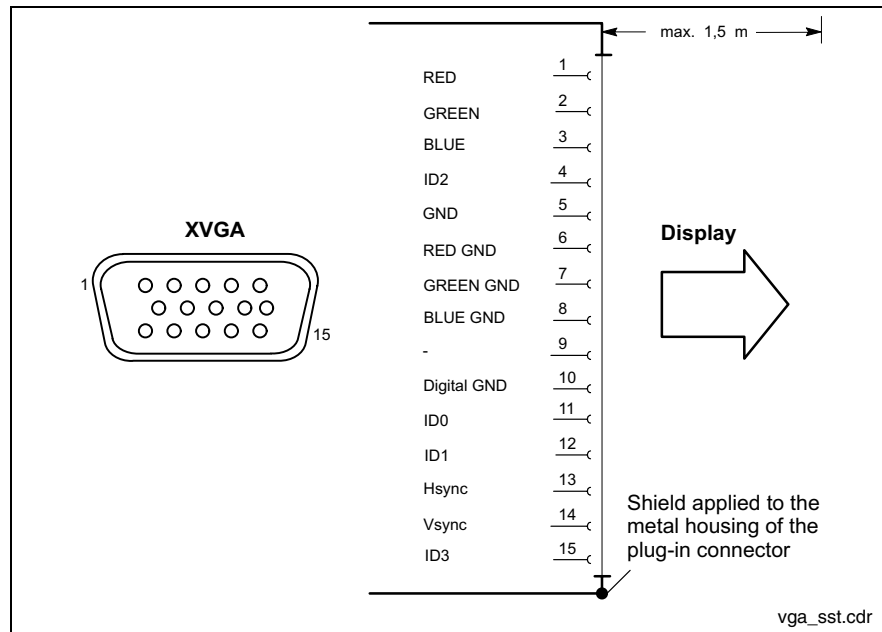


Fig. 7-7: XVGA interface

Resolution The following standard resolutions can be operated with an image refresh rate of min. 72 Hz.

- VGA mode: 640 x 480 pixels 32 bits colors
- SVGA mode: 800 x 600 pixels 32 bits colors
- XGA mode: 1024 x 768 pixels 32 bits colors
- SXGA mode: 1280 x 1024 pixels 24 bits colors

The resolution and number of the colors is set in the Control Panel of the operating system.



CAUTION!

Setting incorrect resolutions and colors may destroy your monitor!

⇒ Please observe the technical data of your monitor and adapt the operating system parameters accordingly.

Recommended monitors for external use are low-radiation models according to TCO95. In addition, you should achieve the desired display resolution with a refresh rate of at least 72 Hz.

Combined Keyboard/Mouse Interface

XKeyb. – PS/2 Mini DIN Keyboard / Mouse Interface

PS/2 Mini DIN female connector, 6-pin	
Cable length:	Max. 1.5 m
Cable type:	Shielded, cross section min. 0.14 mm ²

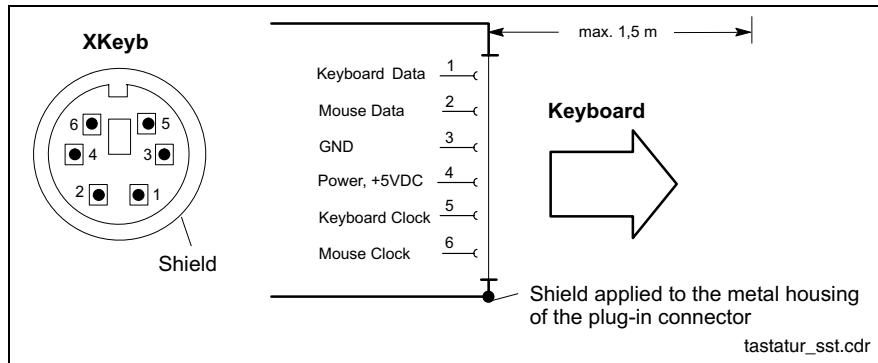


Fig. 7-8: Combined keyboard/mouse interface XKeyb.

Note: If a BTT or VDP is used, keyboard and mouse may only be connected to this display and in no case directly connected to the VPB 40.1.

Mouse Interface

XMouse – PS/2 Mouse Interface

PS/2 Mini DIN female connector, 6-pin	
Cable length:	Max. 1.5 m
Cable type:	Shielded, cross section min. 0.14 mm ²
Interrupt (IRQ):	12
BIOS presettings:	PS/2 mouse support: Enabled PS/2 mouse: Auto detect

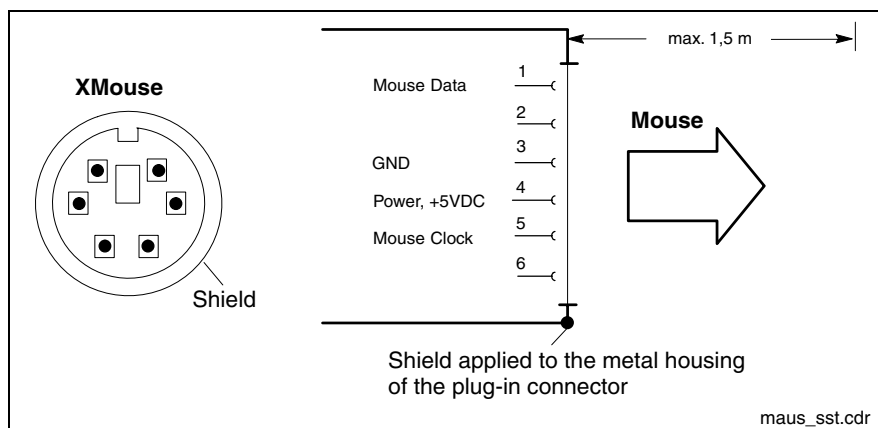


Fig. 7-9: Mouse interface XMouse

If a PS/2 mouse is not recognized by the system, the mouse has to be activated in the BIOS by switching from "Disabled" to "Autodetect". The operating system will not recognize the plugging-in of an external mouse after completed startup, because the mouse initialization occurs during the booting process.

Note: The connected mouse must be PS/2-compatible. Normally, the BIOS reserves IRQ 12 for the PS/2 mouse. If there are address conflicts, e. g., if IRQ 12 has already been used by another PC extension card, you should change the IRQ of this extension card to another IRQ, that is still not-assigned.

Note: If a keyboard with integrated mouse is connected to the XKeby interface, no further mouse may be connected to the mouse interface. The mouse integrated in the keyboard has then to be used.

PC Power Supply

X10 – 24-VDC Power Supply

This connection is used for device variants for 24 VDC. All internally required voltages are generated with electrical isolation via a DC/DC converter. The connection is designed as connector terminal MSTB 1.5, 4-pin. Cables with a cross section of maximum 1.5 mm² can be connected to this connector terminal.

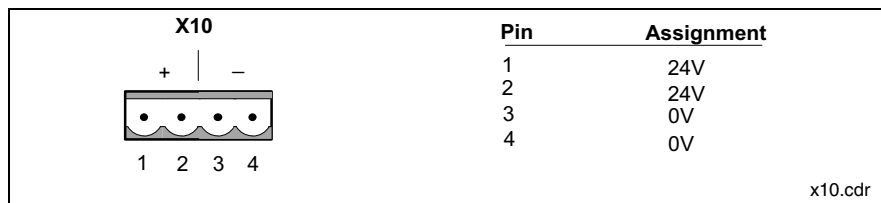


Fig. 7-10: Pin assignment of the 24 VDC connection X10

Parameters	Value
Rated voltage U_N	24 VDC +20 %, -15 %
Residual ripple for U_N	See figure below
Noise and surge immunity	$U_{max} = 35 \text{ V}$ (for $t < 100 \text{ ms}$)
Current consumption for U_N	Max. 4.8 A
Line-side fuse	M6,3A (5x20) medium time-lag
Reverse voltage protection	Via isolating diode The line-side fuse is activated when polarity reversal occurs.

Fig. 7-11: Technical data of the 24 VDC connection



DANGER

Danger without protective separation!

- ⇒ The 24 VDC input voltage must comply with the requirements of the "Protective separation".
- ⇒ Plug and unplug the connector only in no-voltage condition!

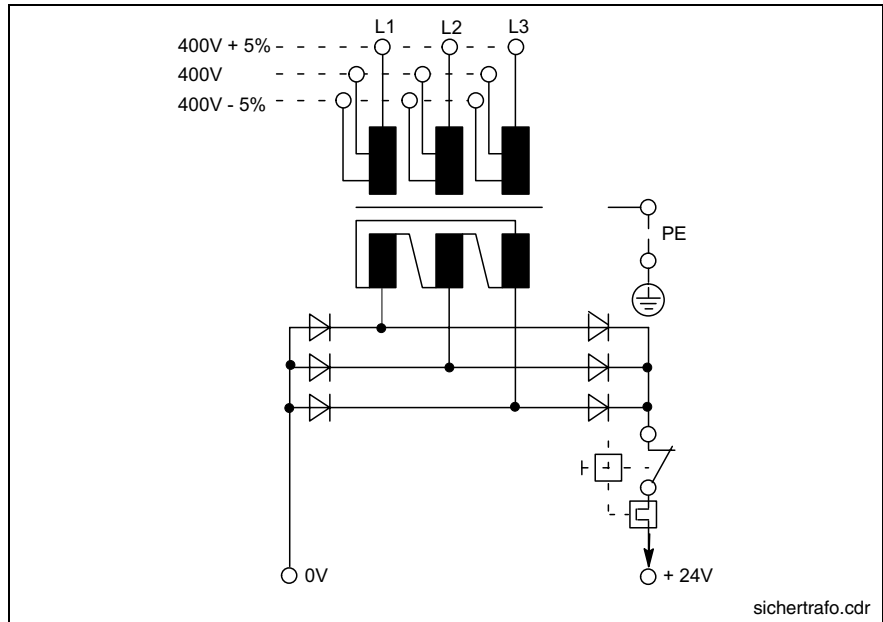


Fig. 7-12: Safety transformer according to EN 60742

Interfering AC voltage components such as resulting from an uncontrolled 3-phase current bridge connection without smoothing with a ripple factor (see DIN 40110/10.75, section 1.2) of 5 % are permissible.

It follows from the above that as upper voltage limit the greatest absolute value is 30.2 V and as lower voltage limit the lowest absolute value is 18.5 V.

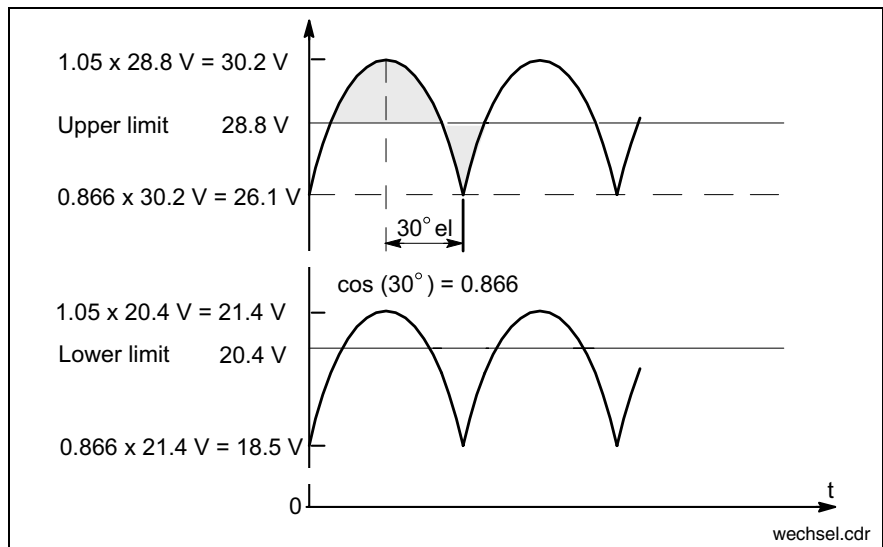


Fig. 7-13: Illustration of the limit values for the 24 VDC voltage

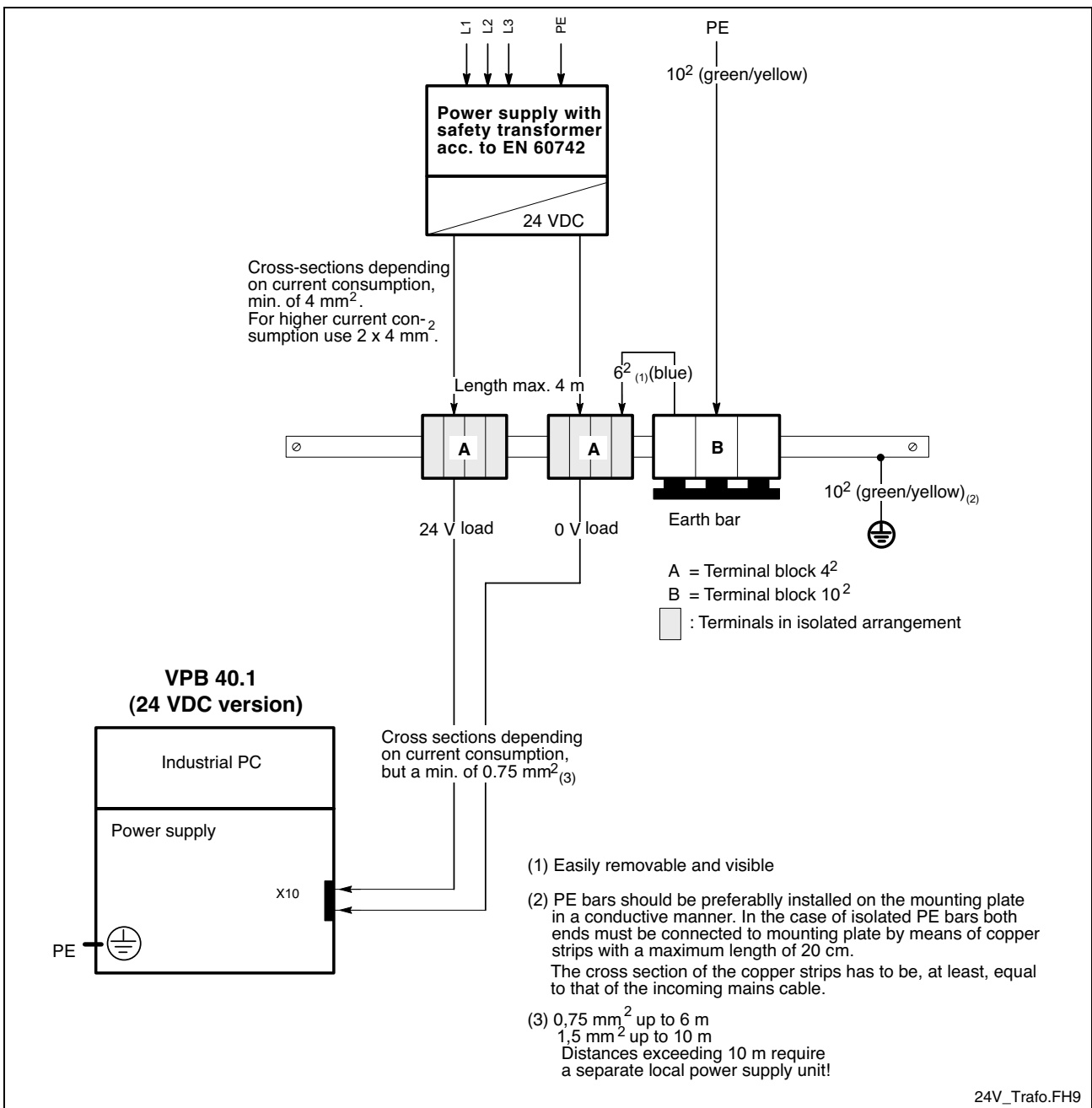


Fig. 7-14: Wiring of the power connection 24 VDC to the VPB 40.1

X20 – 230/115 VAC Power Supply

This connection is used for device variants for 230/115 VAC.
All internally required voltages are generated by the 230/115 VAC power supply unit.

**CAUTION**

The supply voltage must comply with overvoltage category II! Otherwise the integrated power supply unit might be destroyed.

⇒ Use an isolating transformer to generate the 230/115 VAC (see following page).

The 230/115 VAC connection occurs via a 3-pin inlet connector for non-heating apparatus on the connector panel. The maximum cable cross section for the connected cables is 1.5 mm².

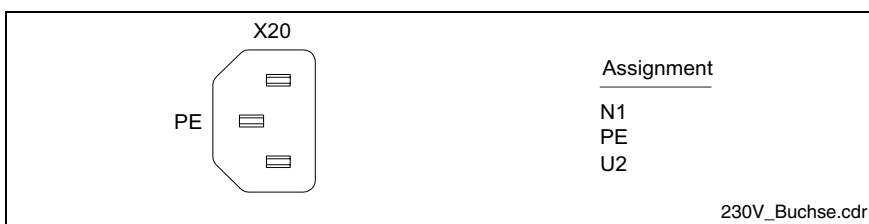


Fig. 7-15: Pin assignment of the 230/115 VAC connection X20

Parameters	Value
Rated voltage	85 VAC ... 264 VAC auto range
Power consumption for $U_N = 230$ VAC	0.7 A
Power consumption for $U_N = 115$ VAC	1.4 A
Inrush current for $U_N = 230$ VAC	30 A cold start 25 °C
Inrush current for $U_N = 115$ VAC	15 A cold start 25 °C
Line-side fuse	1.6 A (5x20)

Fig. 7-16: Technical data 230/115 VAC connection

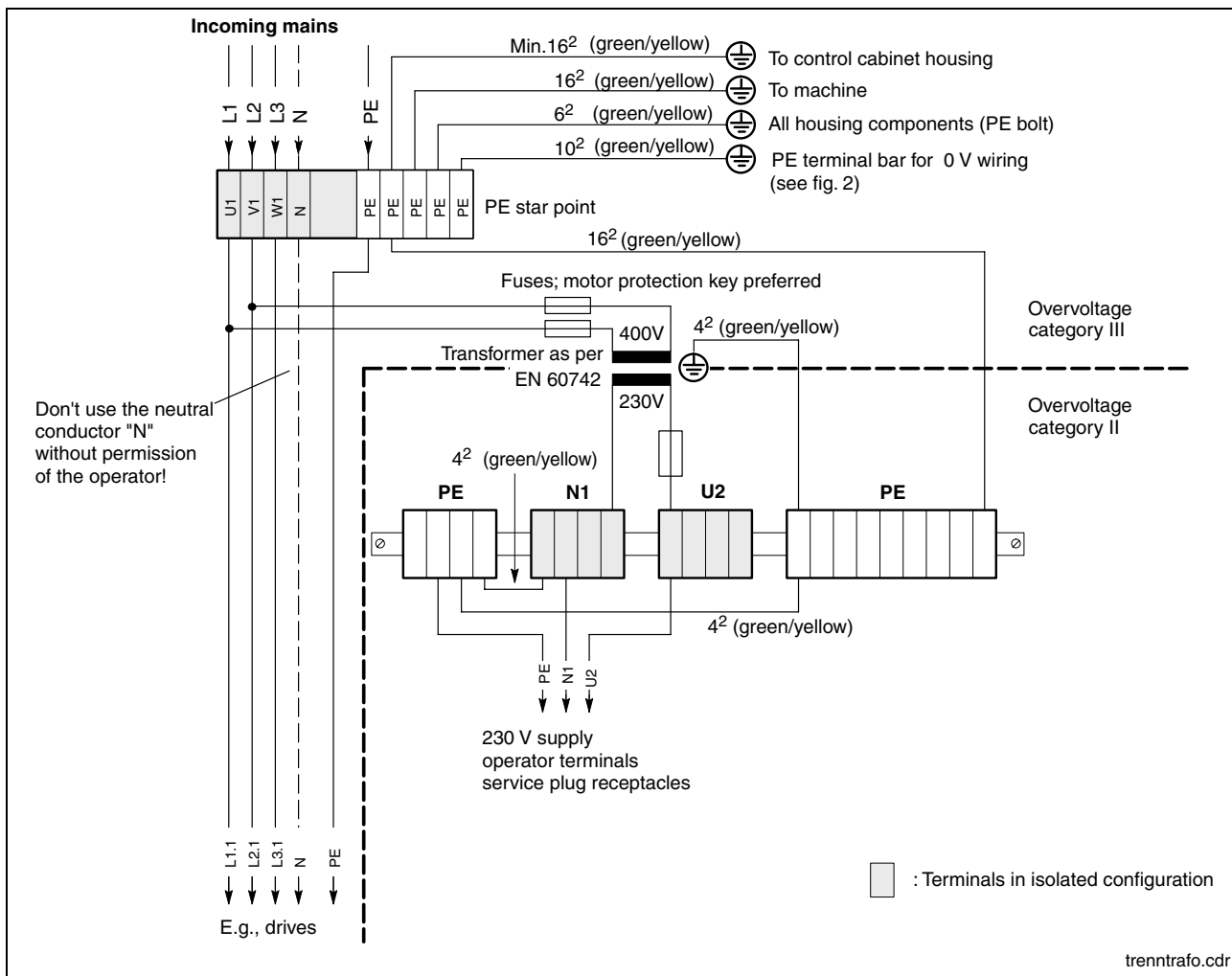


Fig. 7-17: Voltage connection 230 VAC via isolating transformer

Battery Connection

X19 Battery Connection

Connection terminal for an external battery for the integrated UPS:

2-pin	
Cable length	Max. 3.0 m
Cable type	Unshielded, cross section 1.5 mm ²

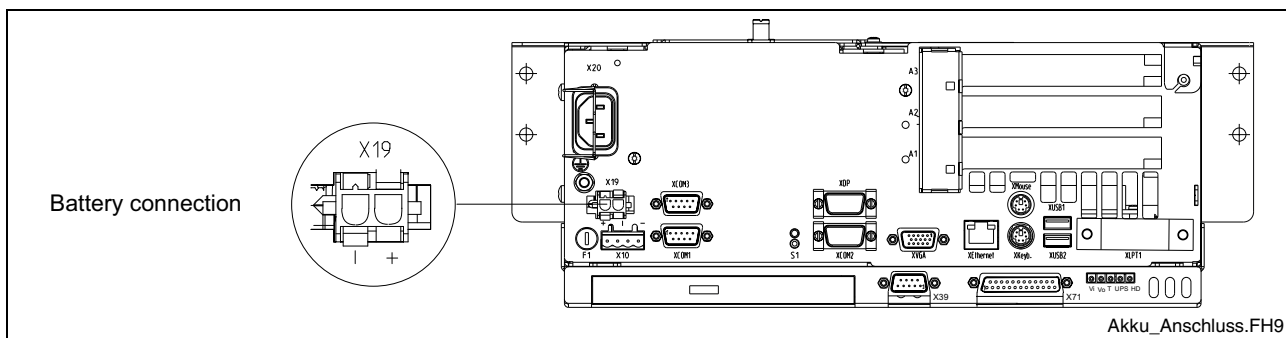


Fig. 7-18: Battery connection

Optional Interfaces

Depending on the variant the VPB 40.1 provides a GIGABIT3 or a G4 display interface.

GIGABIT3 Interface

The GIGABIT3 interface is assigned to the 25-pin D-Sub female connector X71. To this female connector you connect via a ready-made cable available as accessory (see page 10-2) a display BTT 16 or BTT 40.

G4 Display Interface

The G4 display interface is assigned to the 25-pin D-Sub female connector X71. To this female connector you connect via a ready-made cable available as accessory (see page 10-2) a display VDP 16, VDP 40 or VDP 60.

8 Maintenance and Installation

8.1 General Information

The VPB 40.1 devices are maintenance-free. Some components are subject to wear and must be replaced.

Maintenance Include the following measures in your maintenance schedule:

- At least once a year, check all plug and terminal connections for proper tightness and damage. Check that cables are not broken or crushed. Replace damaged parts immediately.
- Check the fan at least once a year.



DANGER

Risk of injury through rotating fan impeller!

⇒ Keep hands and fingers clear of the fan impeller, and do not insert any items.

- Ensure that the batteries of the VPB 40.1 are fully functional. Activate the battery test of the UPS program, so that the battery pack is checked during each restart.

Note: Concerning spare parts function compatibility is ensured for at least 5 years.

8.2 Hard Disk

The hard disk frame can be accessed by a cover. The hard disk can be replaced including the installation frame.



CAUTION!

Loss of data!

⇒ Backup all required application data as well as operating system settings to an external storage medium!



CAUTION!

Risk to damage the VPB 40.1 by electrostatic discharges!

⇒ Comply with all ESD-protection measures during working with modules and components! Avoid electrostatic discharges!

Note: To store user data and to avoid the reinstallation of the operating system and application programs after a hard disk exchange, you should backup the well-working hard disk at regular intervals.

Note: The hard disk to be inserted must already have an installed operating system, if no floppy disk drive is connected to the VPB 40.1. In any case, it is recommended to have a completely installed operating system on the hard disk, to shorten the installation time!

1. Save all required user data as well as the operating system settings of your system on an external storage medium or via the network connection!
2. Disconnect the power supply.
3. Wait until the power supply unit switches off automatically after UPS operation (the UPS LED on the connector panel of the VPB 40.1 flashes red until the UPS switches off the power supply unit). If required, unplug all connectors and the battery cable at interface X19.
4. Loosen the fastening screw of the hard disk's installation frame on the bottom side of the VPB 40.1 (see Fig. 8-1). Lift the hard disk frame and after releasing the retaining spring unplug the ribbon cable, with which the hard disk is connected to the main board. Now, the installation frame with hard disk can be removed.

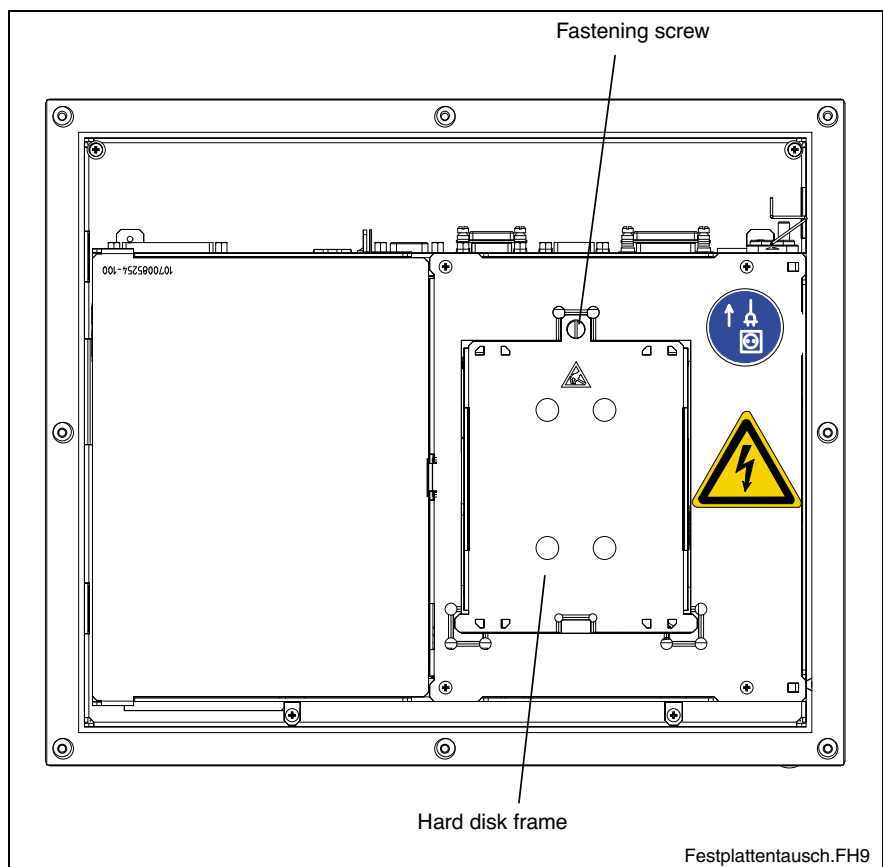


Fig. 8-1: Position of the hard disk's installation frame and the fastening screw

5. The new hard disk is delivered including the installation frame. The new hard disk is always mounted with the installation frame in reverse order as described above.

Note: Check the cable connections leading to the hard disk and the interface connectors for tightness and verify, if the power supply is ready for use.

6. The new hard disk parameters are automatically recognized by the system. If the operating system does not boot automatically after switching on the VPB, interrupt the power supply for at least 10 seconds and restart.
7. After properly booting the PC the user data and the operating system settings for the normal operating mode have to be restored.

CMOS Battery

The battery, with which RAM and clock are buffered, has a limited service life (see chapter "Wear parts" starting on page 4-4).

This lithium battery may not be changed by the user. The battery may only be exchanged by the Bosch Rexroth Service (see chapter "Service & Support") or by personnel specially trained and authorized by the Service.

8.3 Rechargeable Battery Pack

For the VPB devices an external battery pack for cabinet mounting is available.

Battery Connection

The battery pack is connected with the 2-pin male connector strip X19 situated at the connector panel on the upper side of the PC box. For this, an unshielded cable with a cross section of at least 1.5 mm² is used. The cable length is maximum 3.0 m.

Bosch Rexroth provides ready-made cables with a length of 1.0 m and 3.0 m (see chapter "Rechargeable Battery Pack and Cables" on page 10-2).

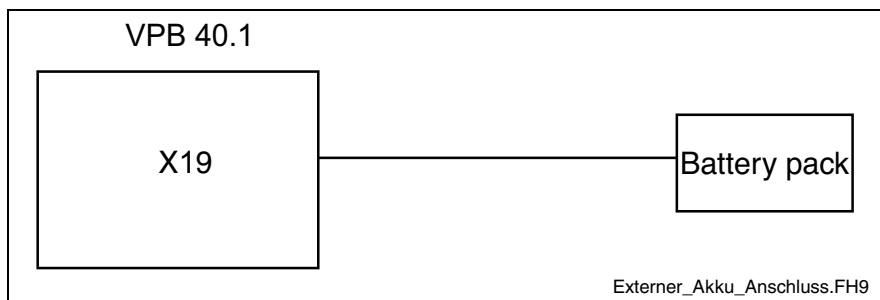


Fig. 8-2: External battery pack

To connect the external batteries proceed as follows:

1. Fix the battery pack in the control cabinet.
2. Switch off the supply voltage for the VPB. If required, unplug all connectors from the VPB.

- Connect the 2-pin battery cable to interface X19 of the operator terminal. The original cable is reverse voltage protected.

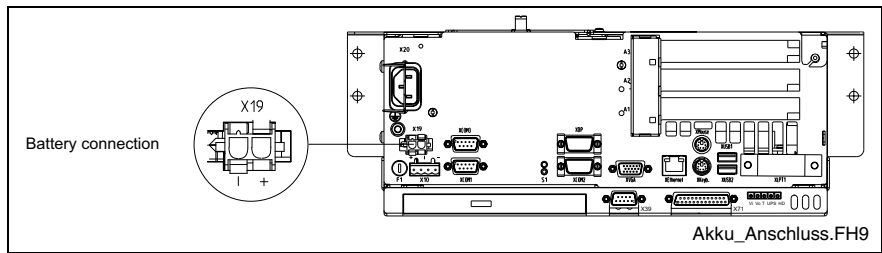


Fig. 8-3: Position and pin assignment of the battery connection



DANGER

⇒ Ensure that the polarity of the batteries is correct. In the case of a polarity reversal of the battery pack a F10A (5x20) fuse is released on the power supply unit. (to change the fuse, please refer to 8.5.)

- Switch on the supply voltage for the VPB 40.1 again.
- Observe the illuminated symbol "UPS" on the front panel of the connected VDP:
 - UPS symbol OFF: Batteries already charged
 - UPS symbol flashes red: Batteries discharged
 Wait approximately 5 hours until the batteries are charged and the UPS symbol extinguishes.

Note: If the new battery pack is not yet charged, during the charging time there's no sufficient USP protection enabling a controlled shutdown of the PC. Therefore, use completely charged batteries, if possible. The charging time of a 2.5Ah battery is approximately 5 hours.

Changing the Battery Pack

The battery pack must be replaced in the following cases:

- The battery test fails during system startup.
- The number of charging cycles exceeds the value depending on the surrounding air temperature and specified in Fig. 8-4.
- The red illuminated symbol "UPS" on the front panel of the VDP flashes for longer than 8 hours.



CAUTION!

Risk of data loss in the RAM during battery exchange!

⇒ Before replacing the battery backup important data, because during battery exchange a voltage breakdown might occur. Data in the RAM might be lost.

Charging Cycles A charging cycle is determined by switching the PC power supply unit on and off. As long as the operator terminal is connected to the supply system, a total discharge of the battery pack is avoided.

The number of charging cycles of the battery pack and thus, its service life is dependent on the surrounding air temperature, in which the battery pack is used. Surrounding air temperature is defined as the temperature, in which the operator terminal and the battery pack are situated, e. g. the internal temperature of the control cabinet or in an operator panel housing.

The following table can be used as guideline:

Surrounding air temperature	Charging cycles	Maintenance interval
+25 °C	4000 cycles	6 years
+35 °C	2000 cycles	3 years
+45 °C	1000 cycles	1.5 years

Fig. 8-4: Number of charging cycles

Note: The used batteries are recyclable and can be returned to Bosch Rexroth after replacement. They must not be disposed in the standard household refuse.

8.4 Extension Cards

To place extensions cards slots for PCI bus and ISA bus are available. Corresponding to the PC box type according to section 4.1, "Technical Data of the PC Box" a maximum of four PCI cards and one ISA card are possible. The maximum permissible card length is 180 mm.



CAUTION!

Risk of damage to the VPB 40.1 or the extension cards by electrostatic discharges!

⇒ Comply with all ESD-protection measures during working with modules and components! Avoid electrostatic discharges!



CAUTION!

Risk of damage to the VPB 40.1 or corruption of application software by integrating not-released extension cards!

⇒ Install only released extension cards, and have them installed by skilled employees.

Inserting an Extension Card

1. Disconnect the power supply. If required, unplug all connectors from the VPB 40.1.
2. Wait until the power supply unit switches off automatically after UPS operation (the UPS LED on the connector panel of the VPB 40.1 flashes red until the UPS switches off the power supply unit).
3. Now, unplug the battery cable (interface X19).
4. Remove the housing cover at the rear side. For this, only the fastening screw at the side, at which the extension card slots are situated, has to be loosened. Then, this part of the housing cover can be removed.

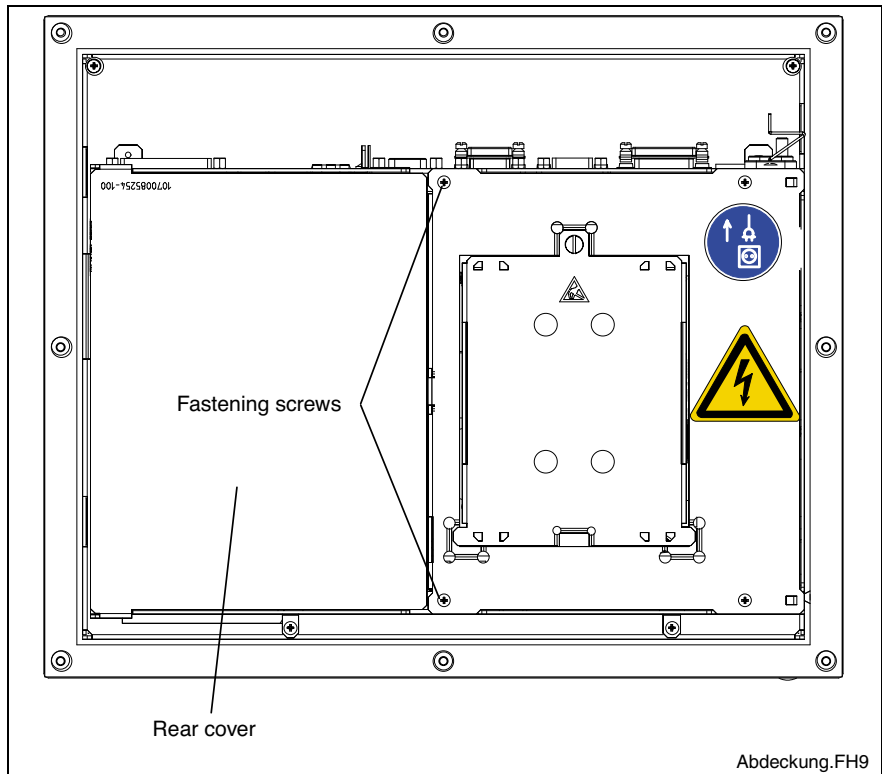


Fig. 8-5: Position of the housing cover and the fastening screw

5. The cover closing the air gap must be removed.
6. Remove the fastening screws from the slot cover.

7. Place the extension card and fix it with the fastening screw.

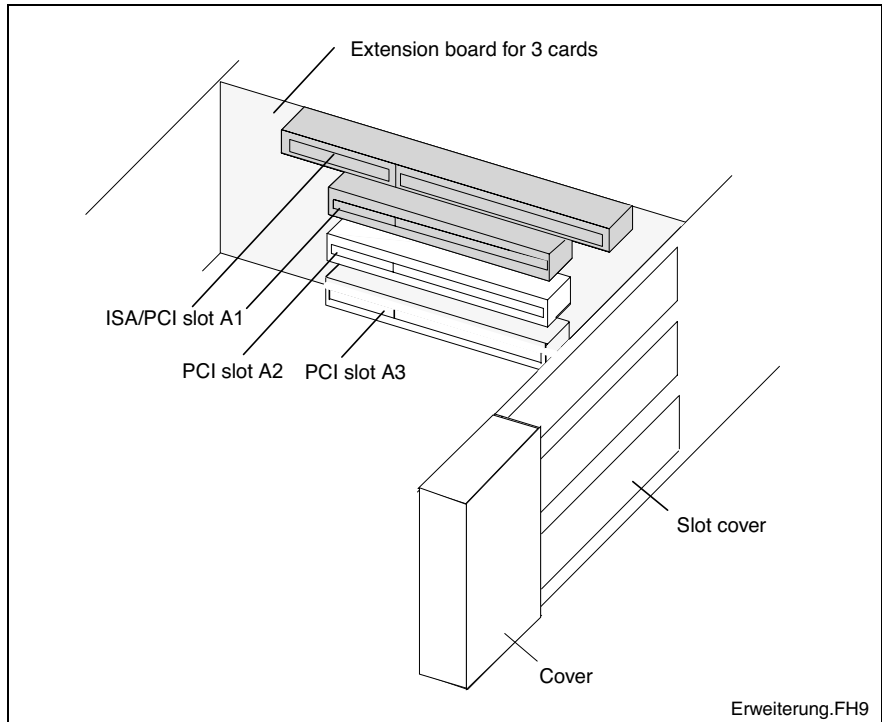


Fig. 8-6: Position of the slots for extension cards

8. Then, snap in the cover again.
 9. Now, mount the slot cover.
 10. Plug in the battery cable again.



CAUTION!

Risk of destruction of the extension card or the main board!

⇒ The combined PCI/ISA bus slot must never be equipped with a PCI card and an ISA card at the same time!

If the card is equipped with a Plug and Play (PnP) function, it is automatically recognized by the operating system and integrated in the system, provided that no hardware conflicts (IRQ etc.) with other extension cards or connected devices occur.

In the event that after a system reboot the functions based on the new card are not available, there may be several reasons:

- The card is not properly seated in the PCI or ISA slot.
- The driver software of the card has not been installed or its installation is faulty.
- IRQ (Interrupt) conflict with other PC hardware components.
- The software of the card has not been installed.



CAUTION!

Risk of destruction of the main board or the ISA card because of address conflicts (IRQ, memory access, I/O address)!

⇒ Observe the information provided by the card manufacturer. You may have to set new configurations in the BIOS and the operating system (e. g. Control Panel of Windows).

BIOS Settings

Note: IRQ0-IRQ6, IRQ8-IRQ13 and IRQ15 are already assigned and are not available for PCI and ISA extension cards!

PCI Slot In the BIOS submenu "PnP/PCI Configurations" you can assign each PCI slot to an IRQ address. By specifying the IRQ address you specify simultaneously the priority.

If solely PnP cards are used, keep the setting "AUTO".

8.5 Replacing Fuses

Several fuses are integrated in the VPB 40.1 devices. The two following figures show their position. If a fuse has to be replaced, the new fuse must have the values specified in Fig. 8-9. Furthermore, it has to be UL-certificated.



DANGER

Lethal electric shock by live parts with more than 50 V!

Risk to damage the device due to short-circuits!

- ⇒ Before you open the VPB to replace a fuse, disconnect it from the power supply (230 V or 24 V)!
- ⇒ Also disconnect the external batteries, before you open the VPB.



CAUTION!

Risk to damage the operator terminal by electrostatic discharges!

- ⇒ Comply with all ESD-protection measures during replacing a fuse! Avoid electrostatic discharges!



Fig. 8-7: Fuse F1 on the connector panel

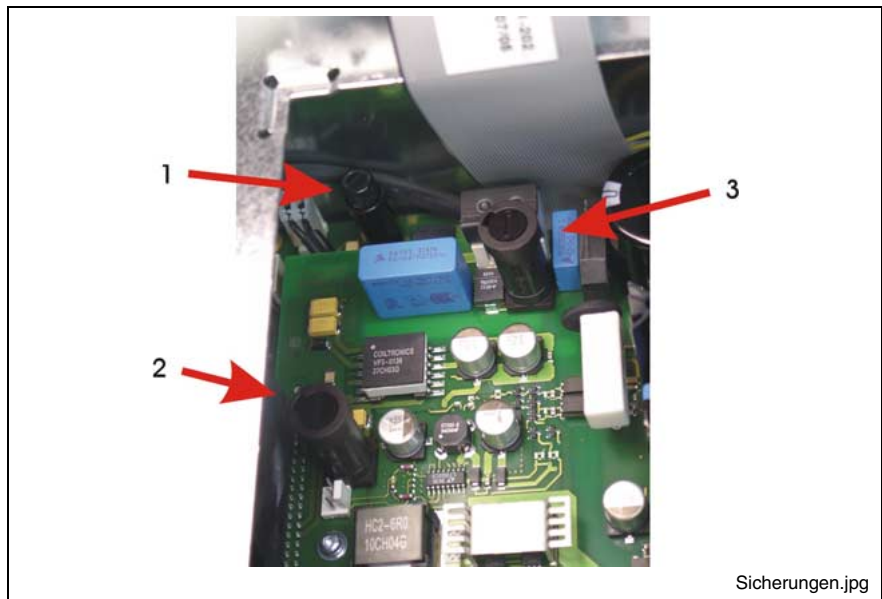


Fig. 8-8: Fuses on the power supply unit and the carrier board (under the harddisk case)

Position	Function	Values	Order number
Connector panel (F1, Fig. 8-7)	Input voltage 24 V	6.3 A, time-lag (5 x 20)	1070 922 300
Power supply board (no. 3 in Fig. 8-8)	Input voltage 230 V	2 A, time-lag (5 x 20)	1070 906 959
Carrier board (no. 1 in Fig. 8-8)	Battery minus	10 A, fast-acting (5 x 20)	1070 904 575
Carrier board (no. 2 in Fig. 8-8)	Battery plus	10 A, fast-acting (5 x 20)	1070 904 575

Fig. 8-9: Fuses

9 Software

9.1 Application Software of the Monitoring Function

Temperature Monitoring

The surrounding air temperature of the VPB 40.1 must not exceed +45 °C. To ensure operational reliability, a temperature monitoring function measures the internal housing temperature.

1. For **temperatures > 50 °C** in the housing a temperature warning is indicated:
 - via the red flashing LED on the front panel of the VDP or
 - via a message window displayed by the operating system. This message must also be evaluated by all application programs, especially by I/O processes.

The temperature warning can be disabled by the program UPS_{NT} for Windows (see section Program UPS_{NT}, page 9-2).

2. If the temperature in the housing exceeds **65 °C**, all variants of the VPB 40.1 will be **shut down and switched off** via the UPS logic circuit (see page 9-1).



DANGER

Uncontrolled machine movements!

⇒ Always ensure that temperatures remain within the non-critical range. In the case of application-sensitive procedures, ensure that machine movements are terminated in a controlled manner before the temperature monitoring function switches off the VPB 40.1.

Uninterruptible Power Supply (UPS)

Note: The uninterruptible power supply is only ready for operation, if the corresponding software is installed. If necessary you can install the UPS_{NT} software on the VPB by using the installation software BRCVInstall available on the desktop.

Operating Principle of the UPS

In the event of a voltage breakdown or if the temperature exceeds 65 °C the UPS logic of the VPB 40.1's power supply unit allows a safe operating system shutdown by means of a battery pack.

If the **voltage breakdown exceeds 20 ms**, the UPS program switches over to battery operation (provided that the battery pack is ready for operation).

Note: The UPS logic of the VPB 40.1's power supply unit is designed for a safe shutdown of all application programs and the operating system. It is not designed to maintain the operation over a longer voltage breakdown!

**DANGER**

Uncontrolled machine movements or data loss, if the batteries are defective!

- ⇒ If there are no batteries in the unit or if the batteries are discharged, the VPB 40.1 will start a system RESET after a voltage breakdown greater than 20 ms!
- ⇒ Possible consequences will be uncontrolled movements or a loss of data.

Voltage Breakdown < 800 ms

If the duration of the voltage breakdown is below 800 ms, the power supply unit switches automatically from battery operation to the normal operating mode.

Voltage Breakdown between 800 ms and 60 s

If the voltage breakdown is greater than 800 ms, the operation system initiates a system shutdown **after** a selectable delay time. This delay time shall be used to close all active applications by the user or by special routines.

If the supply voltage is available again within 60 seconds, the UPS interrupts the operating voltage for further 8 seconds. After that, the operating system is rebooted.

Voltage Breakdown > 60 s

If the interruption of the supply voltage lasts longer than 60 seconds, the UPS switches off the power supply unit.

Note: Set the delay time in the additional software "UPS_{NT}" (see page 9-2).

Program UPS_{NT}

The program "UPS_{NT}" serves to control and monitor the integrated uninterruptible power supply (UPS). In addition, the program has the task to:

- monitor the system temperature in the device
- monitor the function of the fans
- monitor the internal operating voltages
- check the charging status of the batteries, if required
- set the COM interface for the keyboard controller
- set the SIS interface mode

The communication between program and UPS occurs via the serial interface COM4.

The program consists of two parts, a Control Panel Applet and the Windows NT service.

The task of the UPS program is in case of a voltage breakdown within a determinable time (delay time: maximum 60 seconds) to

- send a message to all active applications, so that they can be closed by the user or via special user routines and
- to shutdown the operating system after the expiration of the delay time.

Once the voltage monitoring is activated, it is not possible to stop the system shutdown.

Closing all active applications prevents data loss in the event of an unexpected voltage interruption. After a maximum of 60 seconds the USP switches off the PC power supply unit, if the supply voltage has not been restored (see switch off conditions on page 9-1).

In the normal mode the user has no access to the UPS_{NT} program. Only if the user has special access rights and after restarting the operating system operation is possible and settings can be made.

Note: Modifications of the parameters set in the UPS_{NT} may only be carried out after consulting Bosch Rexroth.

Operation and Configuration UPS_{NT}

Note: To operate UPS_{NT} administrator rights are necessary!

Start/Stop During booting Windows XP the UPS_{NT} program is **automatically** started. If the service shall be stopped, terminated or restarted (e.g. because of a reinstallation or update), select the service manager in the Windows Control Panel.

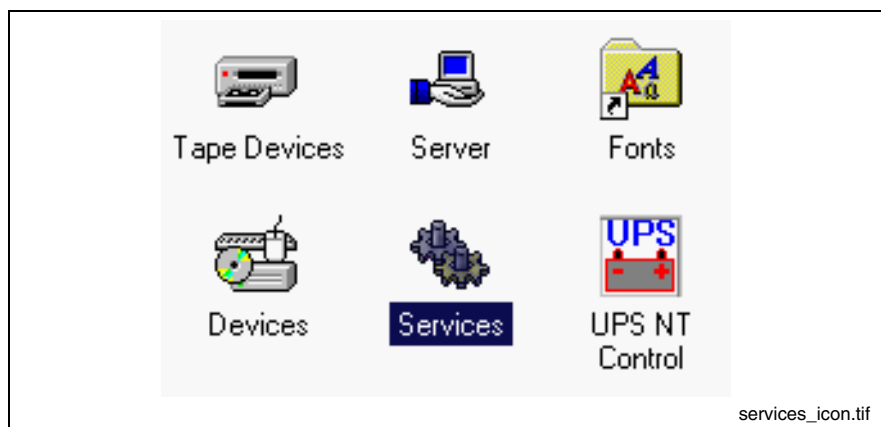
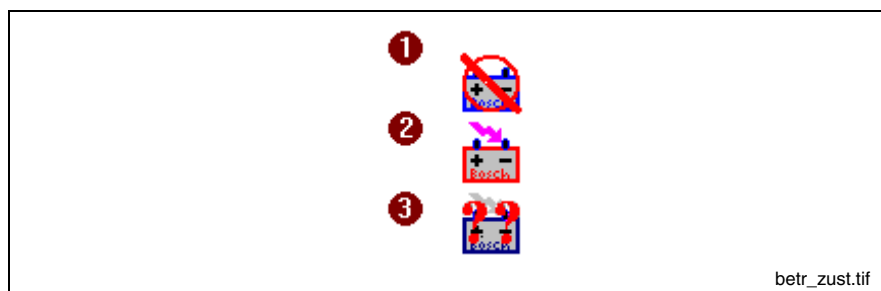


Fig. 9-1: Service manager of the Windows Control Panel

The respective operating status of the service is indicated in the Windows task bar.



Legend: 1: Service has been started, but is not ready for operation yet
 2: Service is in operation
 3: Service is in operation, however errors have been indicated during the start (battery, temperature, fan and voltage errors)

Fig. 9-2: Indication of the operating status of the service in the Windows task bar

In the service manager of Windows the status of the UPS_{NT} service is indicated:

- UPS_{NT} stopped: No entry in the status column
- UPS_{NT} started: Entry "Started" in the status column

The marked entry UPS_{NT} service is started or stopped via the **Start** or **Stop** button.

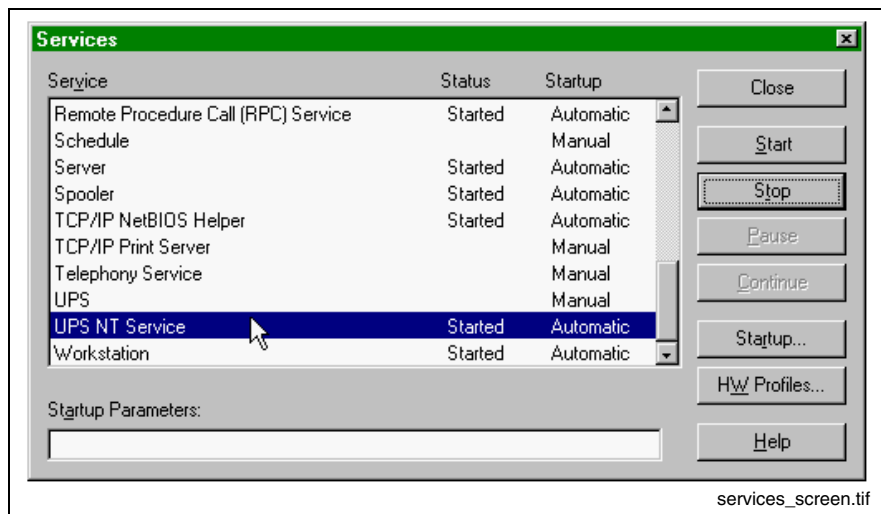


Fig. 9-3: The window "Services"

Configuration Select the UPS_{NT} program **UPS NT Control** in the system control (see Fig. 9-4).

Note: The UPS_{NT} program always runs as a Windows NT service. User changes have no influence on this behavior. The user can not terminate the program without administration rights or stop the monitoring.

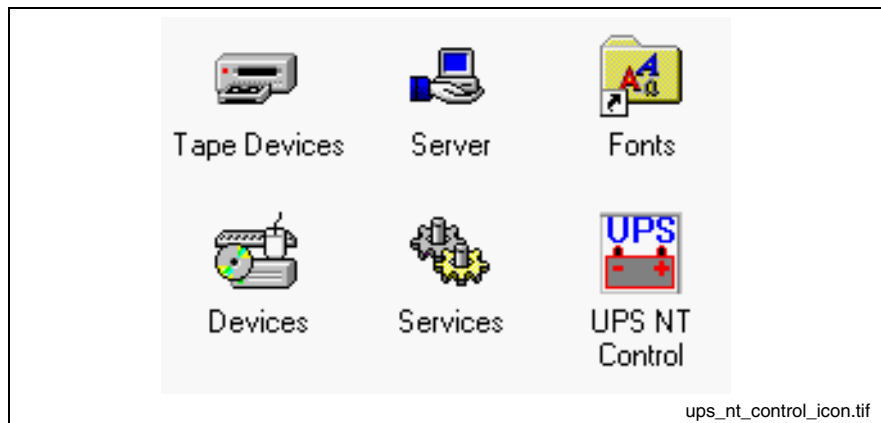


Fig. 9-4: Symbol "UPS NT Control" in the Windows Control Panel

USV Properties and Maintenance After selecting symbol **UPS NT Control**, the window **USV Properties and Maintenance** appears.

The window offers the following tabs, in which further settings can be made.

- **UPS General** tab
- **System Health** tab
- **Profi Bus / Touch Mode** tab
- **About** tab

UPS General After calling up **UPS Properties and Maintenance**, first, the **UPS General** tab is active, with which the basic settings of the starting and run time behavior of the UPS are specified.

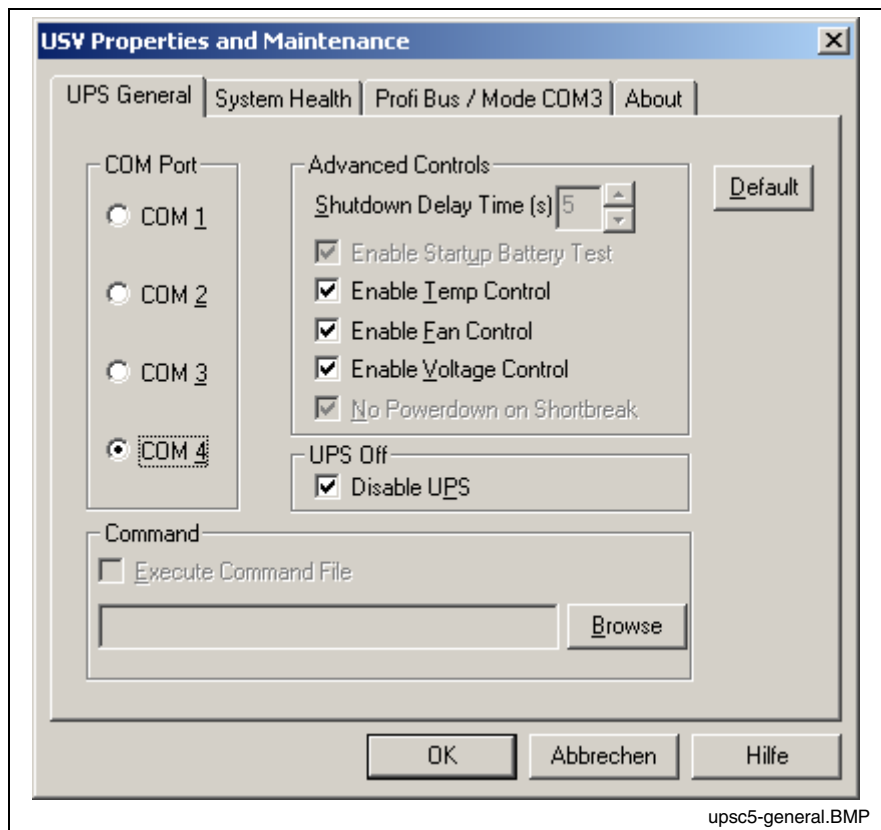


Fig. 9-5: "UPS General" tab

Note: To activate parameter modifications the UPS program is automatically stopped and restarted. During this time (5...10 sec) no monitoring takes place.

COM Port: At this place, the serial communication interface is selected, to which the UPS is connected. If in BIOS one or more serial interfaces are deactivated, the remaining interfaces of Windows NT are renumbered. Therefore, a new interface must be selected in the configuration dialog under COM port. If no interface is found during the starting process of the service, a corresponding dialog is opened and the service is terminated.

In the **Advanced Controls** zone the following settings are possible:

Shutdown Delay Time: Here, a delay time for the shutdown from 0...45 s is determined. This is the time the user has to backup his data. After the expiration of the delay time all application programs are terminated without safety prompt.

When you determine the **Shutdown Delay Time**, observe that between the end of the **Shutdown Delay Time** and the expiration of the 60 seconds after the power down signal remains enough time to shut down the operating system (for closing the Windows system files and generating backups). If the time is too short, the shutdown process is interrupted, because the UPS interrupts the voltage of the power supply unit. This can cause a loss of data.

Note: After the expiration of the **Shutdown Delay Time** the operating system is shut down without safety prompt. Data of opened application programs without backup are then lost.

Enable Startup Battery Test: If the check box is activated, a test of the battery pack is carried out after each restart of the system. In error case an error dialog is generated and a message is sent to the whole system. The UPS program is still running.

After 12 hours the battery test is automatically repeated:

- If errors don't occur any longer, the battery test is automatically repeated every 12 hours.
- If an error occurs, an error dialog is generated, a message is sent to the whole system and the UPS program is terminated.

Enable Temp Control: If this check box is activated a continuous monitoring of the surrounding air temperature takes place. If +50 °C are exceeded, a warning window and the LED Temp at the front of the device flashes. The temperature warning can be deactivated.

For temperatures greater than +65 °C the system is always shut down and switched off via the UPS logic.

The voltage monitoring is still active after a temperature warning.

Enable Fan Control: If this check box is activated, the existing housing and CPU fans are monitored. In error case a corresponding message is indicated and sent to the whole system.

Enable Voltage Control: If the check box is activated, the internal supply voltages are monitored. In error case a corresponding message is indicated and sent to the whole system.

No Powerdown on Shortbreak: If the check box is activated, interruptions of the supply voltage up to 5 sec are permissible and do not influence the operation. Only for voltage breakdowns greater than 5 sec the UPS logic is started and the shutdown of the system is introduced.

UPS Off, Disable UPS: The function **UPS Off, Disable UPS** deactivates the UPS monitoring and the delay, when the power supply unit is switched off:

- If a voltage breakdown occurs, the PC switches immediately off.
- After a conventional shutdown of the system, there's no waiting time of approximately 60 sec until the power supply unit switches off.

This function shortens the waiting time during commissioning and software installation. However, this check box must not be activated in the normal mode.



CAUTION

Loss of data!

⇒ If this check box is activated, a proper system shutdown is no longer possible during a voltage breakdown. The device switches off immediately!

In the **Command** area an executable program (*.exe; *.bat) can be entered or activated, that shall still be started and carried out after the initialization of the shutdown. This is always reasonable, if applications which do not respond to the system messages, have to be backed up or stopped. For this, corresponding clearing and terminating programs can be entered and activated. If several programs have to be executed or if the programs have transfer parameters, they have to be combined and entered in a batchfile.

Note: The entry must not contain any request parameters and the specified program must not start any shutdown!

If you activate the **Default** button, all settings are reset to their **standard values**.

These are:

- COM Port: COM4
- Shutdown Delay Time: 30 sec
- Enable Startup Battery Test: active
- Enable Temp Control: active
- Enable Fan Control: active
- Enable Voltage Control: active
- Disable UPS: inactive
- No Powerdown on Shortbreak: active
- Execute Command File: inactive

System Health This tab indicates the current measured values of the internal operating voltages, the battery voltage, the system temperature and the status of the fan function.

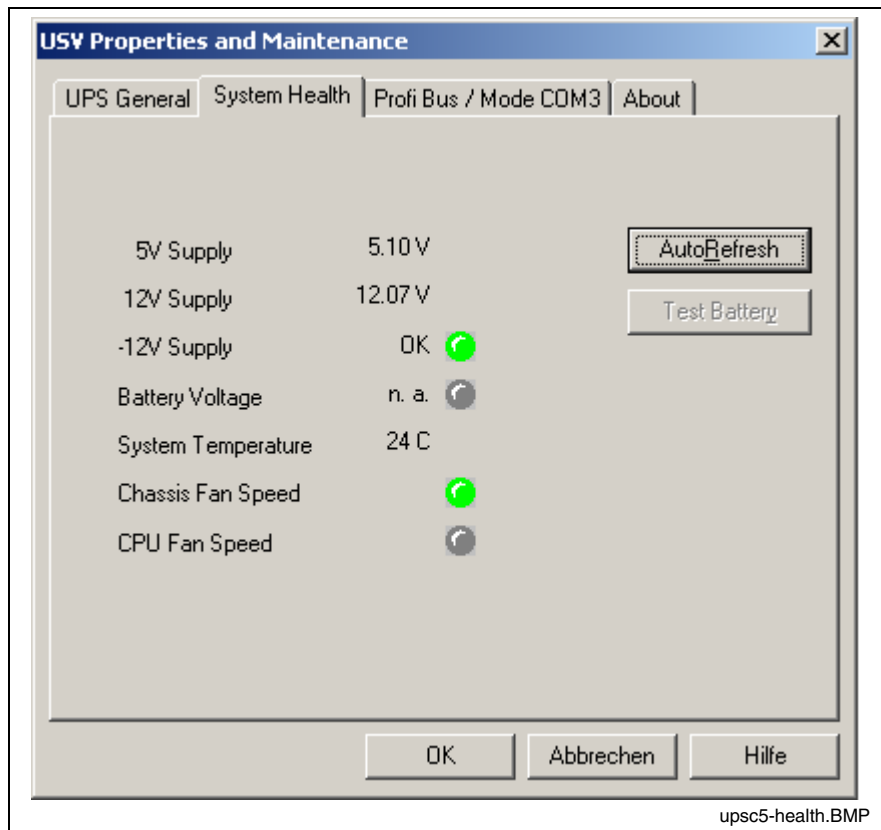


Fig. 9-6: "System Health" tab

The value of the battery voltage (**Battery Voltage**) is only updated after a battery test. The battery test occurs automatically after a system start and then every 12 hours or after pressing the **Test Battery** button.

- The LED flashes red, if the value of the battery voltage measured on load is too low.
- The LED flashes green, if the battery pack is ready for operation.

Note: Excessive battery tests will discharge the battery pack. Never perform more than five battery tests within a period of 24 hours.

The following applies to the fan monitoring (**Fan Speed**):

- Red LED: Fan stands still, or fan speed is too low or too high.
- Green LED: Fan is working properly.

Pressing the **StopAutoRefresh** button disables the automatic updating of the measured values and the labeling on the button changes to **AutoRefresh**.

Pressing the **AutoRefresh** button disables the automatic updating of the measured values and the labeling on the button changes to **StopAutoRefresh**.

PROFIBUS and Further Settings

The **ProfiBus/Mode COM3** tab is divided into two segments:

- Select the PROFIBUS address
- Selection, if the COM3 interface is provided as serial interface at the XCOM3 plug or is internally connected with the keyboard controller.

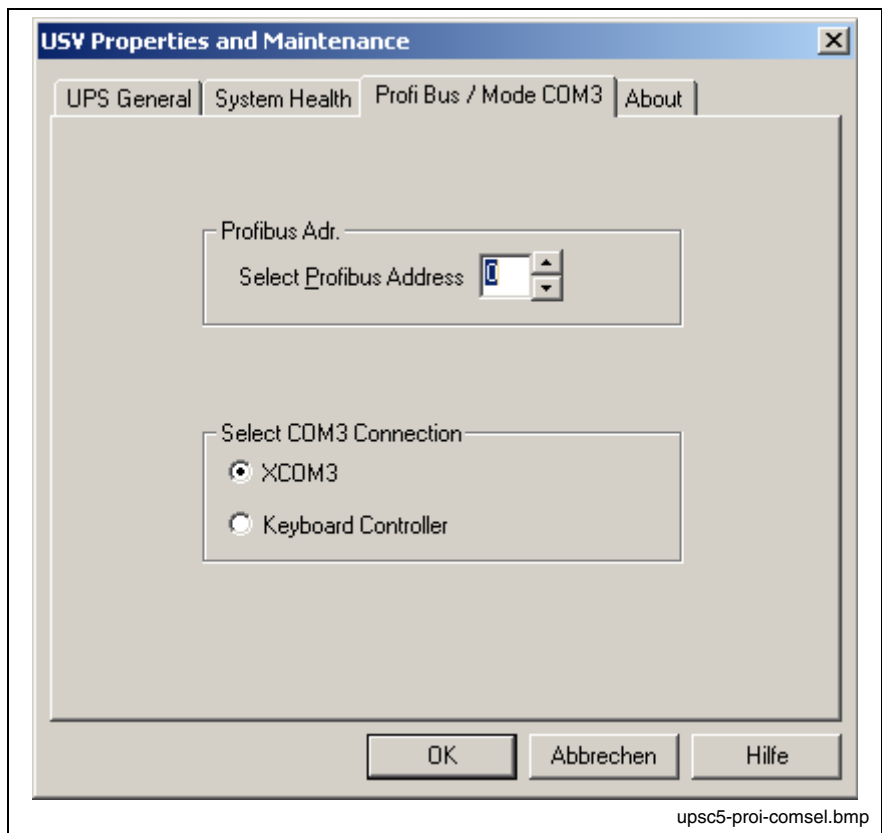


Fig. 9-7: "Profi Bus /Mode COM3" tab

Select COM3 connection	
XCOM3	COM3 is accessible at connection XCOM3
Keyboard Controller	COM3 is internally connected with the Keyboard Controller to - request the status of the M-Keys via the serial interface or - reload firmware into the Keyboard Controller

Fig. 9-8: Select COM3 connection

Note: The following applies to all settings: The UPS service is stopped. All changes will only be effective, when the PC is restarted (switch off and switch on the supply voltage again).

About The **Shutdown Count** value indicated in the **About** tab indicates, how often the UPS has already shut down the system. A battery change is recommended after more than 3000 trips by the UPS, but not later than the recommended maintenance interval (see section 4.6).

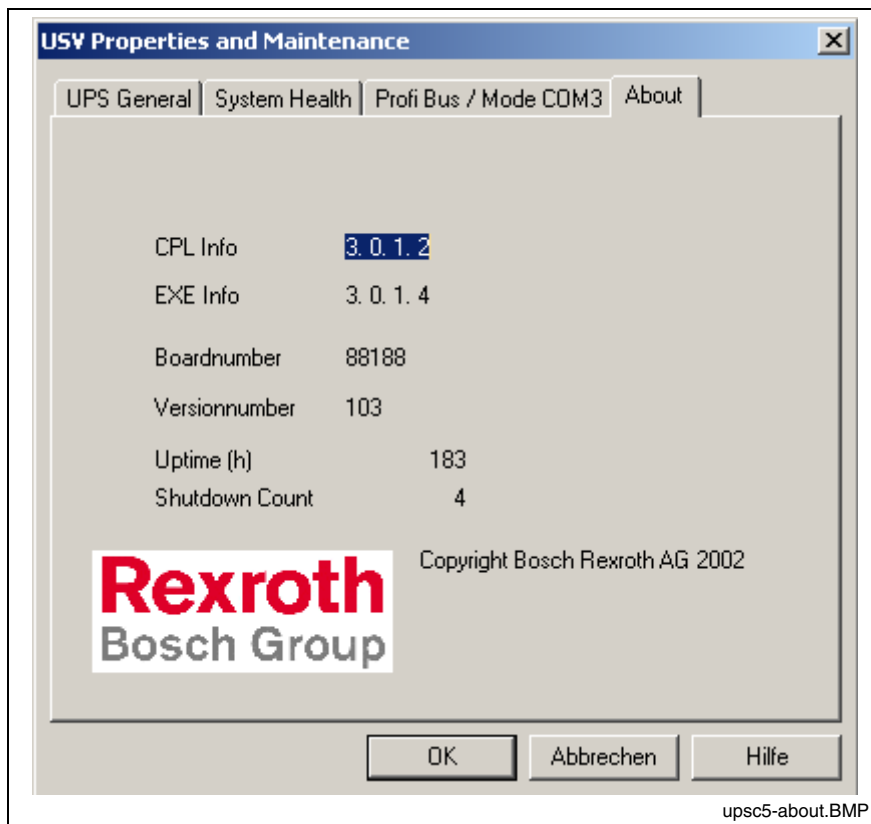


Fig. 9-9: "About" tab

9.2 Touch Screen Software

For certain VDP-type displays a touch screen is integrated, that allows the operation via the touch-sensitive surface of the display.

To ensure the communication of the touch screen controller with the PC, the serial interface XCOM2 inside the device is used. Therefore, the XCOM2 interface situated on the connector panel must not be used.

You have to install the required driver software by means of the installation software BRCVInstall archived on the desktop.

After the installation settings and changes in the application "Pointer Devices" in the Windows Control Panel are possible. You can reach this setup program via "Start -> Programs -> UPDD -> Settings".

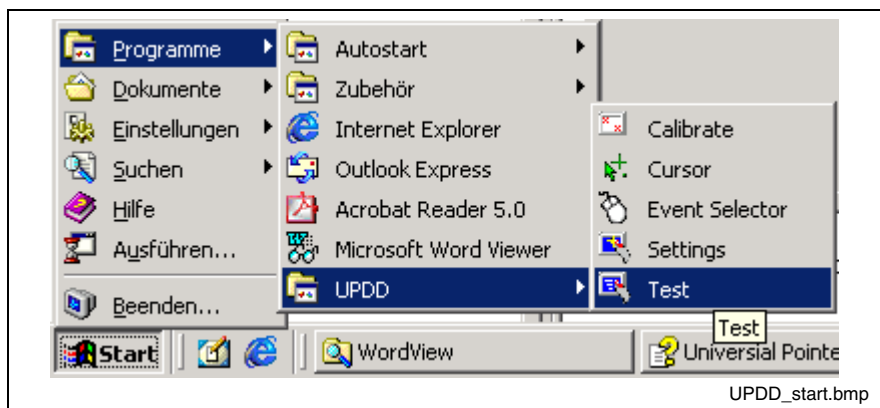


Fig. 9-10: UPDD setup programs for the touch screen

A dialog window appears for the different settings:

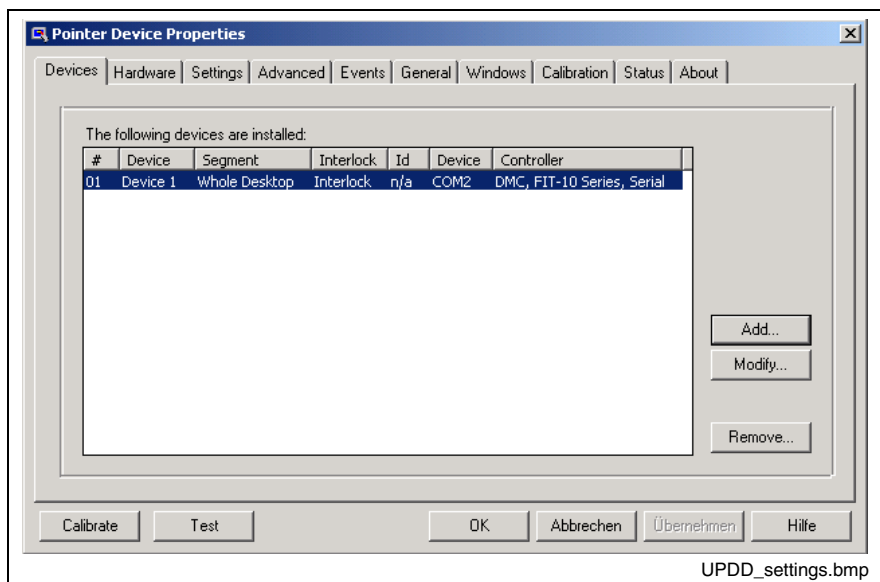


Fig. 9-11: Dialog window to set the touch screen

For further information please select the **Help** button on the respective tab.

Via "Start -> Programs -> UPDD" you reach further useful programs, if required.

The program **Calibrate** might be of special interest. If required, you can calibrate the touch mouse with the help of this program. For this, touch, one after the other, the middle of the four crosses displayed on the screen.

For further information on this programs refer to the online help, which you can start directly as file GENER-EN.CHM in folder D:\ProgramFiles\UPDD\.

10.2 Accessories

Network Connection

Ordering designation	Part number	Description
B-AC STECKER NETZ 230V	1070 912881	Mains connector 230 V, male inlet connector for non-heating apparatus, angular, for self-mounting
BKS-U-N-NTZKAB-IPCRHO-002,5-P	1070 048937	Mains cable 230 V with female inlet connector for non-heating apparatus, angular, cable length 2.5 m

Fig. 10-2: Connectors and cables

Battery Pack and Cables

Ordering designation	Part number	Description
SUP-E01-BTV 16/40	1070 170041	External battery pack BTV 16/40/60
IKL0265/003,0	1070 170040	Connection cable for external battery pack BTV 16/40/60, cable length 3.0 m
IKL0264/001,0	1070 170156	Connection cable for external battery pack BTV 16/40/60, cable length 1.0 m

Fig. 10-3: Battery pack and cables

Connecting Cables to the VDP 16, VDP 40 and VDP 60 (G4 Display Interface)

Ordering designation	Part number	Description
BKS-U-H-G4****-IPCVDP-001,0-P	R911307684	Cable connecting the VPB and the Y-Repeater, flexible, 1 m (this cable must not be used between the VPB and the VDP!)
BKS-U-H-G4****-IPCVDP-005,0-P	R911306043	Cable connecting the VPB and the VDP, flexible, 5 m
BKS-U-H-G4****-IPCVDP-010,0-P	R911306046	Cable connecting the VPB and the VDP, flexible, 10 m
BKS-U-N-G4****-IPCVDP-020,0-P	R911306047	Cable connecting the VPB and the VDP, flexible, 20 m

Fig. 10-4: Connecting cables to the VDP 16, VDP 40 or VDP 60

11 List of Figures

- Fig. 1-1: VPB 40.1 with 3 slot box and connected display VDP (not included in the scope of delivery) 1-1
- Fig. 1-2: PC box, type A and type C 1-2
- Fig. 3-1: Hazard classification (according to ANSI Z535) 3-1
- Fig. 4-1: Technical data: PC box 4-1
- Fig. 4-2: Technical data of the power supply unit 115 V / 230 V 4-2
- Fig. 4-3: Technical data of the power supply unit 24 V 4-2
- Fig. 4-4: Ambient conditions 4-3
- Fig. 4-5: Used standards 4-3
- Fig. 4-6: Battery pack 4-4
- Fig. 4-7: Typical operating and storage conditions of the hard disk 4-5
- Fig. 4-8: Service life of the fan 4-5
- Fig. 5-1: Horizontal mounting of the VPB 40.1 (device with 3 slot box) 5-1
- Fig. 5-2: Height of the VPB 40.1 5-1
- Fig. 5-3: Dimensions of the VPB 40.1 (top view) 5-2
- Fig. 6-1: LEDs to indicate operations and errors on the connector panel 6-1
- Fig. 7-1: Position of the interfaces 7-1
- Fig. 7-2: Interfaces of the VPB 40.1 7-2
- Fig. 7-3: Pin assignment XCOM1 to XCOM3 7-3
- Fig. 7-4: XLPT1 interface 7-4
- Fig. 7-5: USB interfaces XUSB1 and XUSB2 7-5
- Fig. 7-6: Ethernet interface XEthernet 7-6
- Fig. 7-7: XVGA interface 7-7
- Fig. 7-8: Combined keyboard/mouse interface XKeyb. 7-8
- Fig. 7-9: Mouse interface XMouse 7-8
- Fig. 7-10: Pin assignment of the 24 VDC connection X10 7-9
- Fig. 7-11: Technical data of the 24 VDC connection 7-9
- Fig. 7-12: Safety transformer according to EN 60742 7-10
- Fig. 7-13: Illustration of the limit values for the 24 VDC voltage 7-10
- Fig. 7-14: Wiring of the power connection 24 VDC to the VPB 40.1 7-11
- Fig. 7-15: Pin assignment of the 230/115 VAC connection X20 7-12
- Fig. 7-16: Technical data 230/115 VAC connection 7-12
- Fig. 7-17: Voltage connection 230 VAC via isolating transformer 7-13
- Fig. 7-18: Battery connection 7-13
- Fig. 8-1: Position of the hard disk's installation frame and the fastening screw 8-2
- Fig. 8-2: External battery pack 8-3
- Fig. 8-3: Position and pin assignment of the battery connection 8-4
- Fig. 8-4: Number of charging cycles 8-5
- Fig. 8-5: Position of the housing cover and the fastening screw 8-6
- Fig. 8-6: Position of the slots for extension cards 8-7
- Fig. 8-7: Fuse F1 on the connector panel 8-8

- Fig. 8-8: Fuses on the power supply unit and the carrier board (under the harddisk case) 8-9
- Fig. 8-9: Fuses 8-9
- Fig. 9-1: Service manager of the Windows Control Panel 9-3
- Fig. 9-2: Indication of the operating status of the service in the Windows task bar 9-3
- Fig. 9-3: The window "Services" 9-4
- Fig. 9-4: Symbol "UPS NT Control" in the Windows Control Panel 9-4
- Fig. 9-5: "UPS General" tab 9-5
- Fig. 9-6: "System Health" tab 9-8
- Fig. 9-7: "Profi Bus /Mode COM3" tab 9-9
- Fig. 9-8: Select COM3 connection 9-9
- Fig. 9-9: "About" tab 9-10
- Fig. 9-10: UPDD setup programs for the touch screen 9-11
- Fig. 9-11: Dialog window to set the touch screen 9-11
- Fig. 10-1: Type code of the VPB 40.1 10-1
- Fig. 10-2: Connectors and cables 10-2
- Fig. 10-3: Battery pack and cables 10-2
- Fig. 10-4: Connecting cables to the VDP 16, VDP 40 or VDP 60 10-2

12 Index

A

Accessories 10-2
Air pressure 4-3
Ambient conditions 4-3
Appropriate use
 Introduction 2-1
 Uses 2-2

B

Battery Pack 10-2
BIOS settings 8-8
Buffer battery 8-3

C

CMOS Battery 8-3
Combined keyboard/mouse interface 7-8
Compatibility test 4-5
Connections 7-1, 7-2
Connectors 7-2

D

Delay time 9-5
Dimensions 5-1
Display and operating components 6-1

E

Ethernet connection 7-6
Ethernet interface 7-6
External monitor 7-7

F

Fuse 8-8

H

Housing dimensions 5-1

I

Illustration of the limit values for the 24 VDC voltage 7-10
Inappropriate use 2-2
 Consequences, Discharge of liability 2-1
Interfaces 7-1, 7-2
 PS/2 keyboard 7-8
 PS/2 mouse 7-8
 VGA interface 7-6
XCOM1 7-3
XCOM2 7-3
XCOM3 7-3
XEthernet 7-6
XLPT1 7-4

M

- Maintenance 8-1
 - Extension cards 8-5
 - General information 8-1
 - Hard disk 8-1
 - Rechargeable battery pack 8-3
 - Replacing fuses 8-8
- Max. temperature gradient 4-3
- Mechanical strength 4-3
- Monitor and keyboard 6-1
- Mouse interface 7-8

N

- Network connection 10-2

O

- Operating and Error Indication 6-1
- Operation and configuration UPS_{NT} 9-3
- Ordering information 10-1

P

- Parallel interface XLPT1 7-4
- Pin assignment of the 230/115 VAC connection X20 7-12
- PS/2 keyboard connection 7-8
- PS/2 mouse connection 7-8

R

- Relative humidity 4-3

S

- Safety Instructions for Electric Drives and Controls 3-1
- Safety transformer according to EN 60742 7-10
- Serial interfaces XCOM1 to XCOM3 7-3
- Surrounding air temperature 4-3
- System presentation 1-1
 - Brief description 1-1
 - Commissioning 1-2
 - Operating system 1-2
 - Variants 1-2

T

- Technical data
 - Wear parts 4-4
- Technical data 4-1
 - 230/115 VAC connection 7-12
 - Ambient conditions 4-3
 - PC box 4-1
 - Power supply 24 V 4-2
 - Used standards 4-3
- Technical Data
 - Power supply unit 115 V / 230 V 4-2
- Temperature monitoring 9-1
- Type code 10-1

U

- UL/CSA certification 4-4
- Uninterruptible power supply 9-1
 - UPS program 9-2
- UPS program
 - Default setting UPSNT 9-7
 - Functionality 9-2
- USB interfaces 7-5
- Use *See appropriate use and inappropriate use*

V

- VGA connection 7-7
- VGA interface 7-6
- Video adapter
 - CRT 7-7
- Voltage connection 230 VAC via isolating transformer 7-13

W

- Wiring of the power connection 24 VDC to the VPB 40.1 7-11

X

- XCOM1 7-3
- XCOM2 7-3
- XCOM3 7-3
- XLPT1 interface 7-4
- XVGA interface 7-7

13 Service & Support

13.1 Helpdesk

Unser Kundendienst-Helpdesk im Hauptwerk Lohr am Main steht Ihnen mit Rat und Tat zur Seite. Sie erreichen uns

Our service helpdesk at our headquarters in Lohr am Main, Germany can assist you in all kinds of inquiries. Contact us

- telefonisch - by phone:
über Service Call Entry Center
- via Service Call Entry Center **+49 (0) 9352 40 50 60**
Mo-Fr 07:00-18:00
Mo-Fr 7:00 am - 6:00 pm
- per Fax - by fax: **+49 (0) 9352 40 49 41**
- per e-Mail - by e-mail: service.svc@boschrexroth.de

13.2 Service-Hotline

Außerhalb der Helpdesk-Zeiten ist der Service direkt ansprechbar unter

After helpdesk hours, contact our service department directly at

+49 (0) 171 333 88 26
oder - or **+49 (0) 172 660 04 06**

13.3 Internet

Unter www.boschrexroth.com finden Sie ergänzende Hinweise zu Service, Reparatur und Training sowie die **aktuellen** Adressen *) unserer auf den folgenden Seiten aufgeführten Vertriebs- und Servicebüros.

- Verkaufsniederlassungen
- Niederlassungen mit Kundendienst

Außerhalb Deutschlands nehmen Sie bitte zuerst Kontakt mit unserem für Sie nächstgelegenen Ansprechpartner auf.

*) Die Angaben in der vorliegenden Dokumentation können seit Drucklegung überholt sein.

At www.boschrexroth.com you may find additional notes about service, repairs and training in the Internet, as well as the **actual** addresses *) of our sales- and service facilities figuring on the following pages.

- sales agencies
- offices providing service

Please contact our sales / service office in your area first.

*) Data in the present documentation may have become obsolete since printing.

13.4 Vor der Kontaktaufnahme... - Before contacting us...

Wir können Ihnen schnell und effizient helfen wenn Sie folgende Informationen bereithalten:

1. detaillierte Beschreibung der Störung und der Umstände.
2. Angaben auf dem Typenschild der betreffenden Produkte, insbesondere Typenschlüssel und Seriennummern.
3. Tel./Faxnummern und e-Mail-Adresse, unter denen Sie für Rückfragen zu erreichen sind.

For quick and efficient help, please have the following information ready:

1. Detailed description of the failure and circumstances.
2. Information on the type plate of the affected products, especially type codes and serial numbers.
3. Your phone/fax numbers and e-mail address, so we can contact you in case of questions.

13.5 Kundenbetreuungsstellen - Sales & Service Facilities

Deutschland – Germany

vom Ausland:

(0) nach Landeskennziffer weglassen!

from abroad:

don't dial (0) after country code!

Vertriebsgebiet Mitte Germany Centre	SERVICE AUTOMATION CALL ENTRY CENTER Helpdesk MO – FR von 07:00 - 18:00 Uhr from 7 am – 6 pm Tel. +49 (0) 9352 40 50 60 Fax +49 (0) 9352 40 49 41 service.svc@boschrexroth.de	SERVICE AUTOMATION HOTLINE 24 / 7 / 365 außerhalb der Helpdesk-Zeit out of helpdesk hours Tel.: +49 (0)172 660 04 06 oder / or Tel.: +49 (0)171 333 88 26	SERVICE AUTOMATION ERSATZTEILE / SPARES verlängerte Ansprechzeit - extended office time - ♦ nur an Werktagen - only on working days - ♦ von 07:00 - 18:00 Uhr - from 7 am - 6 pm - Tel. +49 (0) 9352 40 42 22
Bosch Rexroth Electric Drives and Controls GmbH Bgm.-Dr.-Nebel-Str. 2 / Postf. 1357 97816 Lohr am Main / 97803 Lohr Kompetenz-Zentrum Europa Tel.: +49 (0)9352 40-0 Fax: +49 (0)9352 40-4885	Bosch Rexroth AG Regionalzentrum West Borsigstrasse 15 40880 Ratingen Tel.: +49 (0)2102 409-0 Fax: +49 (0)2102 409-406 +49 (0)2102 409-430	Bosch Rexroth AG Service-Regionalzentrum Süd-West Siemensstr. 1 70736 Fellbach Tel.: +49 (0)711 51046-0 Fax: +49 (0)711 51046-248	
Bosch Rexroth AG Walsroder Str. 93 30853 Langenhagen Tel.: +49 (0) 511 72 66 57-0 Service: +49 (0) 511 72 66 57-256 Fax: +49 (0) 511 72 66 57-93 Service: +49 (0) 511 72 66 57-783	Bosch Rexroth AG Regionalzentrum Mitte Waldecker Straße 13 64546 Mörfelden-Walldorf Tel.: +49 (0) 61 05 702-3 Fax: +49 (0) 61 05 702-444	Bosch Rexroth AG Beckerstraße 31 09120 Chemnitz Tel.: +49 (0)371 35 55-0 Fax: +49 (0)371 35 55-333	Bosch Rexroth AG Regionalzentrum Ost Walter-Köhn-Str. 4d 04356 Leipzig Tel.: +49 (0)341 25 61-0 Fax: +49 (0)341 25 61-111

Europa (West) - Europe (West)

vom Ausland: (0) nach Landeskennziffer weglassen,
from abroad: don't dial (0) after country code,

Italien: 0 nach Landeskennziffer mitwählen
Italy: dial 0 after country code

<p>Austria - Österreich</p> <p>Bosch Rexroth GmbH Electric Drives & Controls Stachegasse 13 1120 Wien Tel.: +43 (0) 1 985 25 40 Fax: +43 (0) 1 985 25 40-1459</p>	<p>Austria – Österreich</p> <p>Bosch Rexroth GmbH Electric Drives & Controls Industriepark 18 4061 Pasching Tel.: +43 (0)7221 605-0 Fax: +43 (0)7221 605-1220</p>	<p>Belgium - Belgien</p> <p>Bosch Rexroth NV/SA Henri Genessestraat 1 1070 Bruxelles Tel: +32 (0) 2 451 26 08 Fax: +32 (0) 2 451 27 90 info@boschrexroth.be service@boschrexroth.be</p>	<p>Denmark - Dänemark</p> <p>BEC A/S Zinkvej 6 8900 Randers Tel.: +45 87 11 90 60 Fax: +45 87 11 90 61</p>
<p>Denmark - Dänemark</p> <p>Bosch Rexroth A/S Engelsholmvej 26 8900 Randers Tel.: +45 36 77 44 66 Fax: +45 70 10 03 20 tj@boschrexroth.dk</p>	<p>Great Britain – Großbritannien</p> <p>Bosch Rexroth Ltd. Electric Drives & Controls Broadway Lane, South Cerney Cirencester, Glos GL7 5UH Tel.: +44 (0)1285 863-000 Fax: +44 (0)1285 863-030 sales@boschrexroth.co.uk service@boschrexroth.co.uk</p>	<p>Finland - Finnland</p> <p>Bosch Rexroth Oy Electric Drives & Controls Ansatie 6 017 40 Vantaa Tel.: +358 (0)9 84 91-11 Fax: +358 (0)9 84 91-13 60</p>	<p>France - Frankreich</p> <p>Bosch Rexroth SAS Electric Drives & Controls Avenue de la Trentaine (BP. 74) 77503 Chelles Cedex Tel.: +33 (0)164 72-63 22 Fax: +33 (0)164 72-63 20 Hotline: +33 (0)608 33 43 28</p>
<p>France - Frankreich</p> <p>Bosch Rexroth SAS Electric Drives & Controls ZI de Thibaud, 20 bd. Thibaud (BP. 1751) 31084 Toulouse Tel.: +33 (0)5 61 43 61 87 Fax: +33 (0)5 61 43 94 12</p>	<p>France – Frankreich</p> <p>Bosch Rexroth SAS Electric Drives & Controls 91, Bd. Irène Joliot-Curie 69634 Vénissieux – Cedex Tel.: +33 (0)4 78 78 53 65 Fax: +33 (0)4 78 78 53 62</p>	<p>France – Frankreich</p> <p>Tightening & Press-fit: Globe Techniques Nouvelles 143, Av. du Général de Gaulle 92252 La Garenne Colombes Tel.: +33 (0)1 41 19 33 33</p>	<p>Italy - Italien</p> <p>Bosch Rexroth S.p.A. Strada Statale Padana Superiore 11, no. 41 20063 Cernusco S/N.MI Hotline: +39 02 92 365 563 Tel.: +39 02 92 365 1 Service: +39 02 92 365 300 Fax: +39 02 92 365 500 Service: +39 02 92 365 516</p>
<p>Italy - Italien</p> <p>Bosch Rexroth S.p.A. Via Paolo Veronesi, 250 10148 Torino Tel.: +39 011 224 88 11 Fax: +39 011 224 88 30</p>	<p>Italy - Italien</p> <p>Bosch Rexroth S.p.A. Via Mascia, 1 80053 Castellammare di Stabia NA Tel.: +39 081 8 71 57 00 Fax: +39 081 8 71 68 85</p>	<p>Italy - Italien</p> <p>Bosch Rexroth S.p.A. Via del Progresso, 16 (Zona Ind.) 35020 Padova Tel.: +39 049 8 70 13 70 Fax: +39 049 8 70 13 77</p>	<p>Italy - Italien</p> <p>Bosch Rexroth S.p.A. Via Isonzo, 61 40033 Casalecchio di Reno (Bo) Tel.: +39 051 29 86 430 Fax: +39 051 29 86 490</p>
<p>Italy - Italien</p> <p>Tightening & Press-fit: TEMA S.p.A. Automazione Via Juker, 28 20025 Legnano Tel.: +39 0 331 4671</p>	<p>Netherlands – Niederlande/Holland</p> <p>Bosch Rexroth B.V. Kruisbroeksestraat 1 (P.O. Box 32) 5281 RV Boxtel Tel.: +31 (0) 411 65 16 40 Fax: +31 (0) 411 65 14 83 www.boschrexroth.nl</p>	<p>Netherlands - Niederlande/Holland</p> <p>Bosch Rexroth Services B.V. Technical Services Kruisbroeksestraat 1 (P.O. Box 32) 5281 RV Boxtel Tel.: +31 (0) 411 65 19 51 Fax: +31 (0) 411 67 78 14 Hotline: +31 (0) 411 65 19 51 services@boschrexroth.nl</p>	<p>Norway - Norwegen</p> <p>Bosch Rexroth AS Electric Drives & Controls Berghagan 1 or: Box 3007 1405 Ski-Langhus 1402 Ski Tel.: +47 64 86 41 00 Fax: +47 64 86 90 62 Hotline: +47 64 86 94 82 jul.ruud@rexroth.no</p>
<p>Spain – Spanien</p> <p>Goimendi Automation S.L. Parque Empresarial Zuatzu C/ Francisco Grandmontagne no.2 20018 San Sebastian Tel.: +34 9 43 31 84 21 - service: +34 9 43 31 84 56 Fax: +34 9 43 31 84 27 - service: +34 9 43 31 84 60 sat.indramat@goimendi.es</p>	<p>Spain - Spanien</p> <p>Bosch Rexroth S.A. Electric Drives & Controls Centro Industrial Santiga Obradors 14-16 08130 Santa Perpetua de Mogoda Barcelona Tel.: +34 9 37 47 94-00 Fax: +34 9 37 47 94-01</p>	<p>Spain - Spanien</p> <p>Bosch Rexroth S.A. Electric Drives & Controls c/ Almazara, 9 28760 Tres Cantos (Madrid) Tel.: +34 91 806 24 79 Fax: +34 91 806 24 72 fernando.bariego@boschrexroth.es</p>	<p>Sweden - Schweden</p> <p>Bosch Rexroth AB Electric Drives & Controls - Varuvägen 7 (Service: Konsumentvägen 4, Älfsjö) 125 81 Stockholm Tel.: +46 (0) 8 727 92 00 Fax: +46 (0) 8 647 32 77</p>
<p>Sweden - Schweden</p> <p>Bosch Rexroth AB Electric Drives & Controls Ekvåndan 7 254 67 Helsingborg Tel.: +46 (0) 4 238 88 -50 Fax: +46 (0) 4 238 88 -74</p>	<p>Switzerland East - Schweiz Ost</p> <p>Bosch Rexroth Schweiz AG Electric Drives & Controls Hemrietstrasse 2 8863 Buttikon Tel. +41 (0) 55 46 46 111 Fax +41 (0) 55 46 46 222</p>	<p>Switzerland West - Schweiz West</p> <p>Bosch Rexroth Suisse SA Av. Général Guisan 26 1800 Vevey 1 Tel.: +41 (0)21 632 84 20 Fax: +41 (0)21 632 84 21</p>	

Europa (Ost) - Europe (East)

vom Ausland: (0) nach Landeskenziffer weglassen
from abroad: don't dial (0) after country code

Czech Republic - Tschechien Bosch -Rexroth, spol.s.r.o. Hviezdoslavova 5 627 00 Brno Tel.: +420 (0)5 48 126 358 Fax: +420 (0)5 48 126 112	Czech Republic - Tschechien DEL a.s. Strojirenská 38 591 01 Zdar nad Sázavou Tel.: +420 566 64 3144 Fax: +420 566 62 1657	Czech Republic - Tschechien Tightening & Press-fit: Bosch -Rexroth, spol.s.r.o. Stetkova 18 140 68 Praha 4 Tel.: +420 (0)241 406 675	Hungary - Ungarn Bosch Rexroth Kft. Angol utca 34 1149 Budapest Tel.: +36 (1) 422 3200 Fax: +36 (1) 422 3201
Poland – Polen Bosch Rexroth Sp.zo.o. Biuro Poznan ul. Dabrowskiego 81/85 60-529 Poznan Tel.: +48 061 847 64 62 /-63 Fax: +48 061 847 64 02	Poland – Polen Bosch Rexroth Sp.zo.o. ul. Staszica 1 05-800 Pruszków Tel.: +48 (0) 22 738 18 00 – service: +48 (0) 22 738 18 46 Fax: +48 (0) 22 758 87 35 – service: +48 (0) 22 738 18 42	Romania - Rumänien East Electric S.R.L. Bdul Basarabia no.250, sector 3 73429 Bucuresti Tel./Fax:: +40 (0)21 255 35 07 +40 (0)21 255 77 13 Fax: +40 (0)21 725 61 21 eastel@rdsnet.ro	Romania - Rumänien Bosch Rexroth Sp.zo.o. Str. Drobety nr. 4-10, app. 14 70258 Bucuresti, Sector 2 Tel.: +40 (0)1 210 48 25 +40 (0)1 210 29 50 Fax: +40 (0)1 210 29 52
Russia - Russland Bosch Rexroth OOO Wjatskaja ul. 27/15 127015 Moskau Tel.: +7-095-785 74 78 +7-095 785 74 79 Fax: +7 095 785 74 77 laura.kanina@boschrexroth.ru	Russia Belarus - Weissrussland ELMIS 10, Internationalnaya 246640 Gomel, Belarus Tel.: +375/ 232 53 42 70 +375/ 232 53 21 69 Fax: +375/ 232 53 37 69 elmis_ltd@yahoo.com	Turkey - Türkei Bosch Rexroth Otomasyon San & Tic. A..S. Fevzi Cakmak Cad No. 3 34295 Sefaköy Istanbul Tel.: +90 212 411-13 00 Fax: +90 212 411-13 17 www.boschrexroth.com.tr	Turkey - Türkei Servo Kontrol Ltd. Sti. Perpa Ticaret Merkezi B Blok Kat: 11 No: 1609 80270 Okmeydani-Istanbul Tel: +90 212 320 30 80 Fax: +90 212 320 30 81 remzi.sali@servokontrol.com www.servokontrol.com
Slowakia - Slowakei Tightening & Press-fit: MTS, spol .s.r.o. 02755 Kriva 53 Tel.: +421 43 5819 161	Slowenia - Slowenien DOMEL Otoki 21 64 228 Zelezniki Tel.: +386 5 5117 152 Fax: +386 5 5117 225 brane.ozebek@domel.si		

Australien, Süd-Afrika - Australia, South Africa

Australia - Australien AIMS - Australian Industrial Machinery Services Pty. Ltd. 28 Westside Drive Laverton North Vic 3026 Melbourne Tel.: +61 3 93 14 3321 Fax: +61 3 93 14 3329 Hotlines: +61 3 93 14 3321 +61 4 19 369 195 enquires@aimservices.com.au	Australia - Australien Bosch Rexroth Pty. Ltd. No. 7, Endeavour Way Braeside Victoria, 31 95 Melbourne Tel.: +61 3 95 80 39 33 Fax: +61 3 95 80 17 33 mel@rexroth.com.au	South Africa - Südafrika TECTRA Automation (Pty) Ltd. 100 Newton Road, Meadowdale Edenvale 1609 Tel.: +27 11 971 94 00 Fax: +27 11 971 94 40 Hotline: +27 82 903 29 23 georgv@tectra.co.za	South Africa - Südafrika Tightening & Press-fit: Jendamark Automation 76A York Road, North End 6000 Port Elizabeth Tel.: +27 41 391 4735
---	--	--	---

Asien - Asia (incl. Pacific Rim)

<p>China</p> <p>Shanghai Bosch Rexroth Hydraulics & Automation Ltd. No.122, Fu Te Dong Yi Road Waigaoqiao, Free Trade Zone Shanghai 200131 - P.R.China</p> <p>Tel.: +86 21 58 66 30 30 Fax: +86 21 58 66 55 23 richard.yang@boschrexroth.com.cn qf.zhu@boschrexroth.com.cn</p>	<p>China</p> <p>Shanghai Bosch Rexroth Hydraulics & Automation Ltd. 4/f, Marine Tower No.1, Pudong Avenue Shanghai 200120 - P.R.China</p> <p>Tel.: +86 21 68 86 15 88 Fax: +86 21 68 86 05 99 +86 21 58 40 65 77 y.wu@boschrexroth.com.cn</p>	<p>China</p> <p>Bosch Rexroth (China) Ltd. Satellite Service Office Changchun Rm. 1910, Guangming Building No.336 Xi'an Rd., Chao Yang Distr. Changchun 130061 - P.R.China</p> <p>Tel.+Fax: +86 431 898 1129 Mobile: +86 139 431 92 659 shuhong.wang@boschrexroth.com.cn</p>	<p>China</p> <p>Bosch Rexroth (China) Ltd. Satellite Service Office Wuhan No. 22, Pinglianjia, Milanyuan, Golden Harbor No. 236 Longyang Avenue Economic & Technology Development Zone Wuhan 430056 - P.R.China</p> <p>Tel.+Fax: +86 27 84 23 23 92 Mobile: +86 139 71 58 89 67 ym.zhu@boschrexroth.com.cn</p>
<p>China</p> <p>Bosch Rexroth (China) Ltd. Beijing Representative Office Xi San Qi Dong, De Sheng Mei Wai Hai Dian District Beijing 100096, P.R.China</p> <p>Tel.: +86 10 82 91 22 29 Fax: +86 10 82 91 81 09 yan.zhang@boschrexroth.com.cn</p>	<p>China</p> <p>Bosch Rexroth (China) Ltd. Guangzhou Repres. Office Room 3710-3716, Metro Plaza, Tian He District, 183 Tian He Bei Rd Guangzhou 510075, P.R.China</p> <p>Tel.: +86 20 87 55 00 30 +86 20 87 55 00 11 Fax: +86 20 87 55 23 87 andrew.wang@boschrexroth.com.cn</p>	<p>China</p> <p>Bosch Rexroth (China) Ltd. Dalian Representative Office Room 2005, Pearl River Int. Building No.99 Xin Kai Rd., Xi Gang District Dalian, 116011, P.R.China</p> <p>Tel.: +86 411 83 68 26 02 Fax: +86 411 83 68 27 02 jason.tan@boschrexroth.com.cn</p>	<p>China</p> <p>Tightening & Press-fit: C. Melchers GmbH & Co Shanghai Representation 13 Floor Est Ocean Centre No.588 Yanan Rd. East 65 Yanan Rd. West Shanghai 200001</p> <p>Tel.: +86 21 63 52 88 48 Fax: +86 21 63 51 31 38 shermanxia@sh.melchers.com.cn</p>
<p>Hongkong</p> <p>Bosch Rexroth (China) Ltd. 6th Floor, Yeung Yiu Chung No.6 Ind Bldg. 19 Cheung Shun Street Cheung Sha Wan, Kowloon, Hongkong</p> <p>Tel.: +852 27 86 46 32 Fax: +852 27 42 60 57 Paul.li@boschrexroth.com.cn</p>	<p>India - Indien</p> <p>Bosch Rexroth (India) Ltd. Electric Drives & Controls Plot. No.96, Phase III Peenya Industrial Area Bangalore – 560058</p> <p>Tel.: +91 80 51 17 0-211...-218 Fax: +91 80 83 94 345 +91 80 83 97 374 mohanvelu.t@boschrexroth.co.in</p>	<p>India - Indien</p> <p>Bosch Rexroth (India) Ltd. Electric Drives & Controls Advance House, II Floor Ark Industrial Compound Narol Naka, Makwana Road Andheri (East), Mumbai - 400 059</p> <p>Tel.: +91 22 28 56 32 90 +91 22 28 56 33 18 Fax: +91 22 28 56 32 93 singh.op@boschrexroth.co.in</p>	<p>India - Indien</p> <p>Tightening & Press-fit: MICO Hosur Road Adugodi 560 030 Bangalore Karnataka</p> <p>Tel.: +91 80 22 99 28 86</p>
<p>India - Indien</p> <p>Bosch Rexroth (India) Ltd. S-10, Green Park Extension New Delhi – 110016</p> <p>Tel.: +91 11 26 56 65 25 +91 11 26 56 65 27 Fax: +91 11 26 56 68 87 koul.rp@boschrexroth.co.in</p>	<p>Indonesia - Indonesien</p> <p>PT. Bosch Rexroth Building # 202, Cilandak Commercial Estate Jl. Cilandak KKO, Jakarta 12560</p> <p>Tel.: +62 21 7891169 (5 lines) Fax: +62 21 7891170 - 71 rudu.karimun@boschrexroth.co.id</p>	<p>Japan</p> <p>Bosch Rexroth Automation Corp. Service Center Japan Yutakagaoka 1810, Meito-ku, NAGOYA 465-0035, Japan</p> <p>Tel.: +81 52 777 88 41 +81 52 777 88 53 +81 52 777 88 79 Fax: +81 52 777 89 01</p>	<p>Japan</p> <p>Bosch Rexroth Automation Corp. Electric Drives & Controls 2F, I.R. Building Nakamachidai 4-26-44, Tsuzuki-ku YOKOHAMA 224-0041, Japan</p> <p>Tel.: +81 45 942 72 10 Fax: +81 45 942 03 41</p>
<p>Korea</p> <p>Bosch Rexroth-Korea Ltd. Electric Drives & Controls 1515-14 Dadae-Dong, Saha-gu Pusan Metropolitan City, 604-050</p> <p>Tel.: +82 51 26 00 741 Fax: +82 51 26 00 747 eunkyoung.kim@boschrexroth.co.kr</p>	<p>Korea</p> <p>Bosch Rexroth-Korea Ltd. Electric Drives and Controls Bongwoo Bldg. 7FL, 31-7, 1Ga Jangchoong-dong, Jung-gu Seoul, 100-391</p> <p>Tel.: +82 234 061 813 Fax: +82 222 641 295</p>	<p>Korea</p> <p>Bosch Rexroth-Korea Ltd. Electric Drives & Controls 1515-14 Dadae-Dong, Saha-gu Ulsan, 680-010</p> <p>Tel.: +82 52 256-0734 Fax: +82 52 256-0738 keonhyun.ieong@boschrexroth.co.kr</p>	<p>Korea</p> <p>Tightening & Press-fit: KVT Co., Ltd. 901, Daeryung Techno Town 8 481-11 Gasan-Dong Geumcheon-Gu Seoul, 153-775 Tel.: +82 2 2163 0231 9</p>
<p>Malaysia</p> <p>Bosch Rexroth Sdn.Bhd. 11, Jalan U8/82, Seksyen U8 40150 Shah Alam Selangor, Malaysia</p> <p>Tel.: +60 3 78 44 80 00 Fax: +60 3 78 45 48 00 hhlum@boschrexroth.com.my rexroth1@tm.net.my</p>	<p>Singapore - Singapur</p> <p>Bosch Rexroth Pte Ltd 15D Tuas Road Singapore 638520</p> <p>Tel.: +65 68 61 87 33 Fax: +65 68 61 18 25 lai.ts@boschrexroth.com.sg</p>	<p>Taiwan</p> <p>Bosch Rexroth Co., Ltd. Taichung Industrial Area No.19, 38 Road Taichung, Taiwan 407, R.O.C.</p> <p>Tel : +886 - 4 -235 08 383 Fax: +886 - 4 -235 08 586 jim.lin@boschrexroth.com.tw david.lai@boschrexroth.com.tw</p>	<p>Taiwan</p> <p>Bosch Rexroth Co., Ltd. Tainan Branch No. 17, Alley 24, Lane 737 Chung Cheng N.Rd. Yungkang Tainan Hsien, Taiwan, R.O.C.</p> <p>Tel : +886 - 6 -253 6565 Fax: +886 - 6 -253 4754 charlie.chen@boschrexroth.com.tw</p>
<p>Thailand</p> <p>NC Advance Technology Co. Ltd. 59/76 Moo 9 Ramintra road 34 Tharang, Bangkokhen, Bangkok 10230</p> <p>Tel.: +66 2 943 70 62 +66 2 943 71 21 Fax: +66 2 509 23 62 Hotline +66 1 984 61 52 sonkawin@hotmail.com</p>			

Nordamerika – North America

USA Headquarters - Hauptniederlassung Bosch Rexroth Corporation Electric Drives & Controls 5150 Prairie Stone Parkway Hoffman Estates, IL 60192-3707 Tel.: +1 847 645-3600 Fax: +1 847 645-6201 servicebrc@boschrexroth-us.com repairbrc@boschrexroth-us.com	USA Central Region - Mitte Bosch Rexroth Corporation Electric Drives & Controls 1701 Harmon Road Auburn Hills, MI 48326 Tel.: +1 248 393-3330 Fax: +1 248 393-2906	USA Southeast Region - Südost Bosch Rexroth Corporation Electric Drives & Controls 2810 Premiere Parkway, Suite 500 Duluth, GA 30097 Tel.: +1 678 957-4050 Fax: +1 678 417-6637	USA SERVICE-HOTLINE - 7 days x 24hrs - +1-800-REXROTH +1 800 739-7684
USA Northeast Region – Nordost Bosch Rexroth Corporation Electric Drives & Controls 99 Rainbow Road East Granby, CT 06026 Tel.: +1 860 844-8377 Fax: +1 860 844-8595	USA West Region – West Bosch Rexroth Corporation Electric Drives & Controls 7901 Stoneridge Drive, Suite 220 Pleasanton, CA 94588 Tel.: +1 925 227-1084 Fax: +1 925 227-1081		Canada East - Kanada Ost Tightening & Press-fit: Bosch Rexroth Canada Corp. 5345 Outer Drive unit 5 Windsor, Ontario Canada N9A 6J3 Tel.: +1 519 737 7393
Canada East - Kanada Ost Bosch Rexroth Canada Corporation Burlington Division 3426 Mainway Drive Burlington, Ontario Canada L7M 1A8 Tel.: +1 905 335 5511 Fax: +1 905 335 4184 michael.moro@boschrexroth.ca	Canada West - Kanada West Bosch Rexroth Canada Corporation 5345 Goring St. Burnaby, British Columbia Canada V7J 1R1 Tel.: +1 604 205 5777 Fax: +1 604 205 6944 david.gunby@boschrexroth.ca	Mexico Bosch Rexroth Mexico S.A. de C.V. Calle Neptuno 72 Unidad Ind. Vallejo 07700 Mexico, D.F. Tel.: +52 55 57 54 17 11 Fax: +52 55 57 54 50 73 mario.francioli@boschrexroth.com.mx	Mexico Bosch Rexroth S.A. de C.V. Calle Argentina No 3913 Fracc. las Torres 64930 Monterrey, N.L. Tel.: +52 81 83 49 80 91 +52 81 83 49 80 92 +52 81 83 49 80 93 Fax: +52 81 83 65 52 80

Südamerika – South America

Argentina - Argentinien Bosch Rexroth S.A.I.C. "The Drive & Control Company" Rosario 2302 B1606DLD Carapachay Provincia de Buenos Aires Tel.: +54 11 4756 01 40 +54 11 4756 02 40 +54 11 4756 03 40 +54 11 4756 04 40 Fax: +54 11 4756 01 36 +54 11 4721 91 53 victor.jabif@boschrexroth.com.ar	Argentina - Argentinien NAKASE SRL Servicio Tecnico CNC Calle 49, No. 5764/66 B1653AOX Villa Balester Provincia de Buenos Aires Tel.: +54 11 4768 36 43 Fax: +54 11 4768 24 13 Hotline: +54 11 155 307 6781 nakase@usa.net nakase@nakase.com gerencia@nakase.com (Service)	Brazil - Brasilien Bosch Rexroth Ltda. Av. Tégula, 888 Ponte Alta, Atibaia SP CEP 12942-440 Tel.: +55 11 4414 -56 92 +55 11 4414 -56 84 Fax sales: +55 11 4414 -57 07 Fax serv.: +55 11 4414 -56 86 alexandre.wittwer@rexroth.com.br	Brazil - Brasilien Bosch Rexroth Ltda. R. Dr.Humberto Pinheiro Vieira, 100 Distrito Industrial [Caixa Postal 1273] 89220-390 Joinville - SC Tel./Fax: +55 47 473 58 33 Mobil: +55 47 9974 6645 sergio.prochnow@boschrexroth.com.br
Columbia - Kolumbien Reflutec de Colombia Ltda. Calle 37 No. 22-31 Santafé de Bogotá, D.C. Colombia Tel.: +57 1 208 65 55 Fax: +57 1 269 97 37 reflutec@etb.net.co			

Bosch Rexroth AG
Electric Drives and Controls
P.O. Box 13 57
97803 Lohr, Germany
Bgm.-Dr.-Nebel-Str. 2
97816 Lohr, Germany
Phone +49 (0)93 52-40-50 60
Fax +49 (0)93 52-40-49 41
service.svc@boschrexroth.de
www.boschrexroth.com

